

ADELAIDE

BLUE • WSB 0264 ADELAIDE

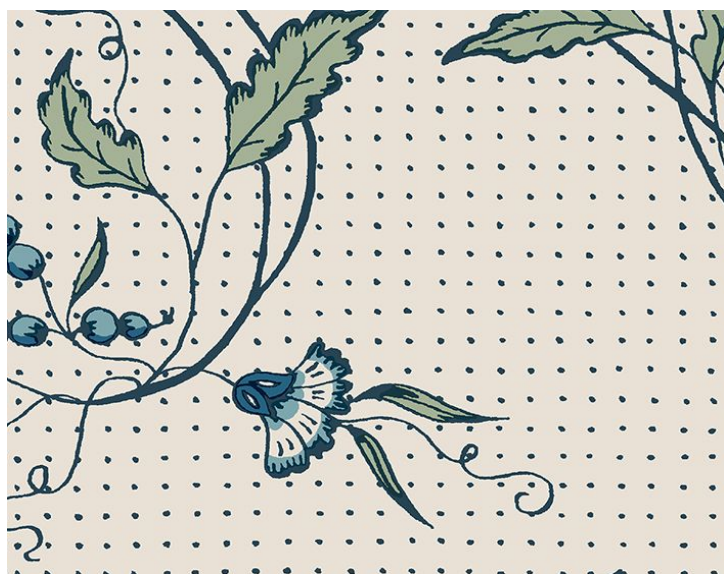
Printed Wallcoverings from the Le Village Collection by Sandberg



APPROX. MATERIAL WIDTH	20.86" / 52.98 cm
APPROX. REPEAT ..	HORIZONTAL 20.86" / 52.98 cm VERTICAL 20.86" / 52.98 cm
MATCH	HALF DROP
CONTENT	PAPER / NON-WOVEN TRIMMED COVERS AREA OF: 57.2 SQ FT
FIRECODE	EURO CLASS B-S1, D0
CLEANABILITY	WASHABLE
MADE IN	SWEDEN
STOCKED IN	SUPPLIERS WAREHOUSE EUROPE
DESIGN	FLORAL
SCALE	LARGE

DESIGN INSPIRATION

Inspired by the floral designs of French fabrics known as Les Indiennes. These exotic florals date back to the mid-seventeenth century when merchants living in Marseille imported them from India for the manufacture of clothing. They later became popular motifs for Domino papers, the precursors to wallpaper that were used to line travelling cases, furniture, hat boxes and books. This Adelaide wallpaper has the colorway blue.



DETAIL IMAGE