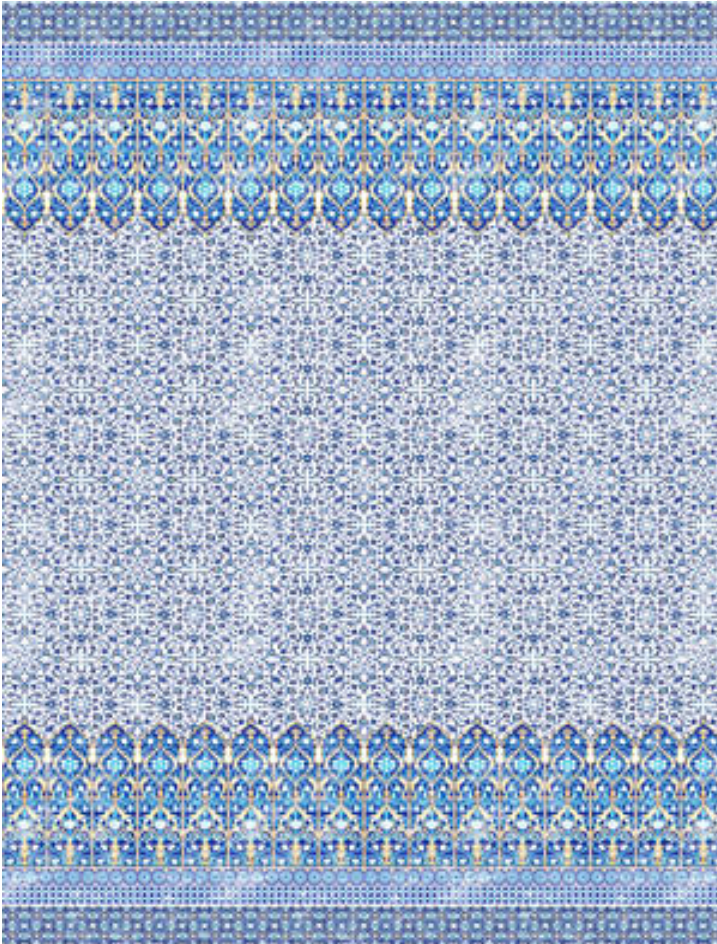


IZNIK OVERDYE - PANEL

CLASSIC • WNM 1009 IZNI

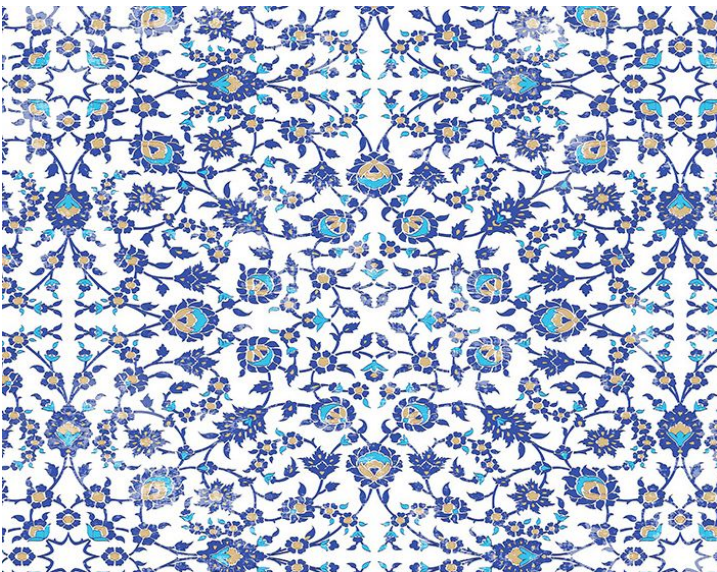
Murals / Panels, Printed Grasscloths from the Ottoman Fantasy Collection by Nicolette Mayer



APPROX. MATERIAL WIDTH	34" / 86.36 cm
APPROX. REPEAT ..	HORIZONTAL 34" / 86.36 cm VERTICAL 144" / 365.76 cm
MATCH	STRAIGHT
CONTENT	METALLIC GRASSCLOTH ON PAPER TRIMMED
CLEANABILITY	STRIPPABLE, SPONGEABLE
MADE IN	U.S.A.
STOCKED IN	SUPPLIERS WAREHOUSE USA
DESIGN	ARCHITECTURAL ELEMENTS BOTANICAL / FOLIAGE FLORAL
SCALE	EXTRA LARGE

DESIGN INSPIRATION

"Topkapi Palace, Iznik style pottery, and the beautiful carpets in Palaces old and new, we tried to dream and reimagine an ideal Ottoman-inspired new kind of chic. Colors that are fresh and modern, blended with themes that date back hundreds of years, Topkapi Garden includes sumptuous velvets and Belgian linens, with metallic grasscloth wallpapers and wall panels. Wall panels that are uniquely designed to be cuttable at popular and 9', 10' and 12' wall heights, solving many typical issues designers have. Topkapi Garden is a pattern inspired by the Iznik tiled wall mural at the Topkapi Palace, in Istanbul, Turkey. A garden of cypress trees, tall as minarets and underplanted with hyacinth bells, has been immortalized on tiles in an alcove in the harem, once the most private – and forbidden – part of the palace." --Nicolette Mayer



DETAIL IMAGE