

# ROSARIUM

APRICOT MULTI • WJ2 0000 25155

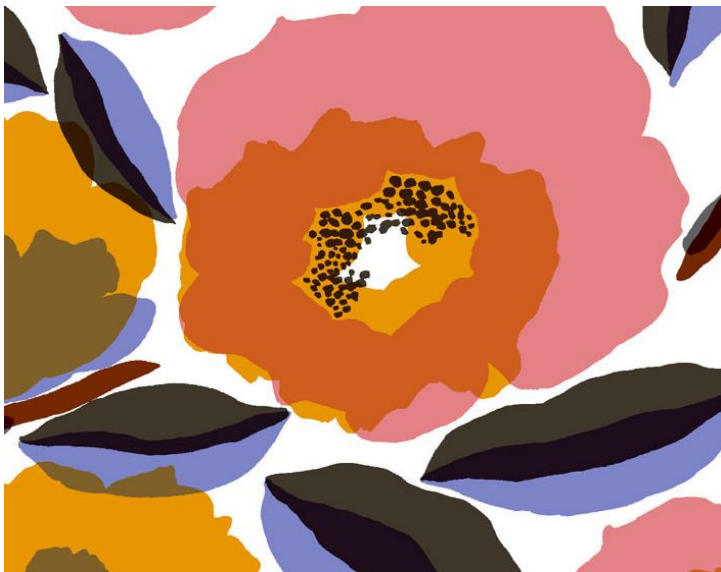
Printed Wallcoverings from the Marimekko Wallcovering 06 Collection by Jannelli & Volpi



APPROX. MATERIAL WIDTH	27.5" / 69.85 cm
APPROX. REPEAT ..	HORIZONTAL 13.25" / 33.66 cm VERTICAL 19.5" / 49.53 cm
MATCH .....	STRAIGHT
CONTENT .....	PAPER / NON-WOVEN TRIMMED
PERFORMANCE / ..	CONTRACT FLAME RETARDANT (FR)
FIRECODE .....	ASTM E84-98 CLASS A, EURO CLASS B-S1, D0
CLEANABILITY ....	WASHABLE
MADE IN .....	ITALY
STOCKED IN .....	SUPPLIERS WAREHOUSE ITALY
DESIGN .....	FLORAL
SCALE .....	MEDIUM

#### DESIGN INSPIRATION

The Rosarium design by Aino-Maija Metsola captures a rose garden where the fullest bloom will soon be over. Petals are already coming off in the autumn wind. A true labor of love, this bold motif can be found front and center in the designer's own home.



DETAIL IMAGE