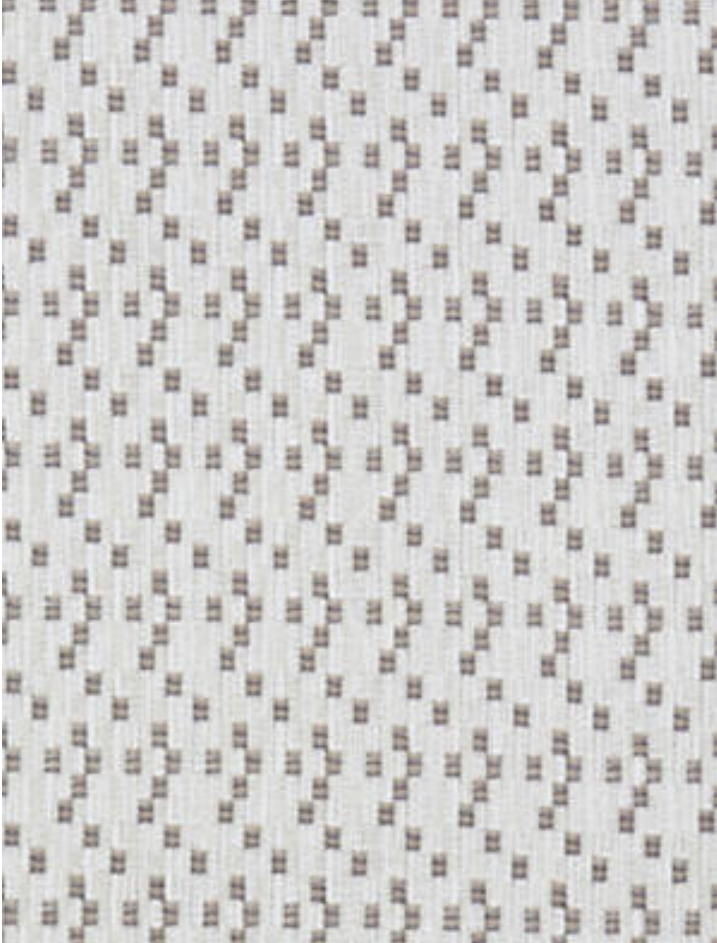


NORITA

HARBOR MIST • SU 0002 4597

Jacquards / Wovens from the Waterfall Collection by Grey Watkins



APPROX. MATERIAL WIDTH 54" / 137.16 cm
APPROX. REPEAT .. HORIZONTAL .75" / 1.91 cm
VERTICAL 1.5" / 3.81 cm
MATCH STRAIGHT
CONTENT 58% RECYCLE COTTON 27% RAYON 15%
POLYESTER
SUGGESTED USE .. HEAVY DUTY MULTIPURPOSE
PERFORMANCE / .. FLAME RETARDANT (FR)
CONTRACT HEAVY DUTY ABRASION
ABRASION 50,000 WYZENBEEK
FIRECODE CLASS I, CAL 117
UFAC AND NFPA 260
MADE IN U.S.A.
STOCKED IN SCALAMANDRE WAREHOUSE U.S.A.
DESIGN DOTS / CIRCLES
SMALL SCALE
SCALE SMALL



DETAIL IMAGE