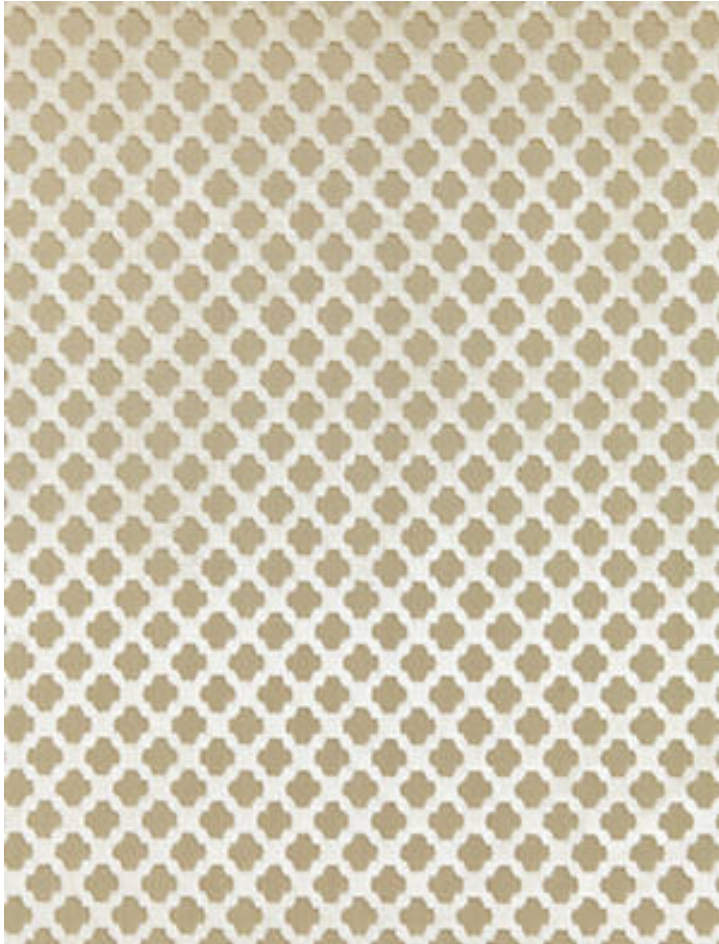


# POMFRET

ALABASTER • SC 0014 26692M

Jacquards / Wovens, Velvets from the Botanica Collection by Scalamandre



APPROX. MATERIAL WIDTH	55" / 139.70 cm
APPROX. REPEAT ..	HORIZONTAL 1" / 2.54 cm VERTICAL 1" / 2.54 cm
CONTENT .....	53% COTTON 47% VISCOSE 100% COTTON
SUGGESTED USE ..	MEDIUM DUTY MULTIPURPOSE
ABRASION .....	30,000 WYZENBEEK
CLEANABILITY ....	DRY CLEAN ONLY
MADE IN .....	INDIA
STOCKED IN .....	SCALAMANDRE WAREHOUSE U.S.A.
DESIGN .....	DIAMOND / OGEE SMALL SCALE
SCALE .....	SMALL

#### DESIGN INSPIRATION

One of Scalamandre's most enduring patterns, this luxurious cut velvet is woven in an small allover quatrefoil pattern. Our new interpretation updates this classic velvet in eight new shades, ranging from quiet neutrals to lively brights and chic carbon grey. This new and refined version of the geometric design is woven in silky viscose pile against a fine cotton ground, adding plushness to upholstery, headboards and decorative accents.



DETAIL IMAGE