

SQUARE LINK EMBROIDERED TAPE

PEAR • SC 0004 T3287

Tapes from the Merchante Collection by Scalamandre

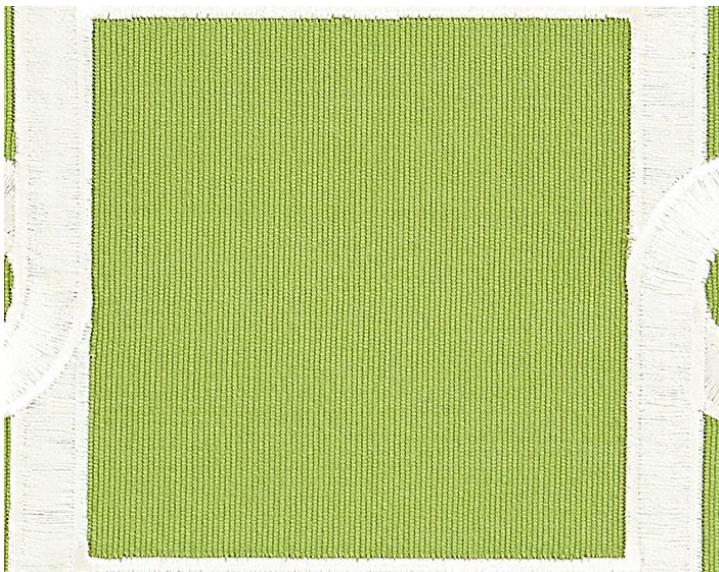
SHOWING 7" ACROSS



APPROX. MATERIAL WIDTH	6.25" / 15.88 cm
APPROX. REPEAT ..	VERTICAL 5.25" / 13.34 cm
CONTENT	70% COTTON 30% RAYON 100% COTTON
EMBROIDERY CONTENT. .	100% RAYON
SUGGESTED USE ..	LIGHT DUTY MULTIPURPOSE
CLEANABILITY	DRY CLEAN ONLY
MADE IN	INDIA
STOCKED IN.	SCALAMANDRE WAREHOUSE U.S.A.
DESIGN	DOTS / CIRCLES FRETWORK / LATTICE

DESIGN INSPIRATION

This dramatic tape features a circle-and square link motif, embroidered in dense satin stitching against a cotton ground. Its bold motif and wide band is well suited to accenting upholstered chairs, pillows and floor length curtain panels.



DETAIL IMAGE