

CALLISTO SILK WEAVE

STRAW • SC 0003 WP88359

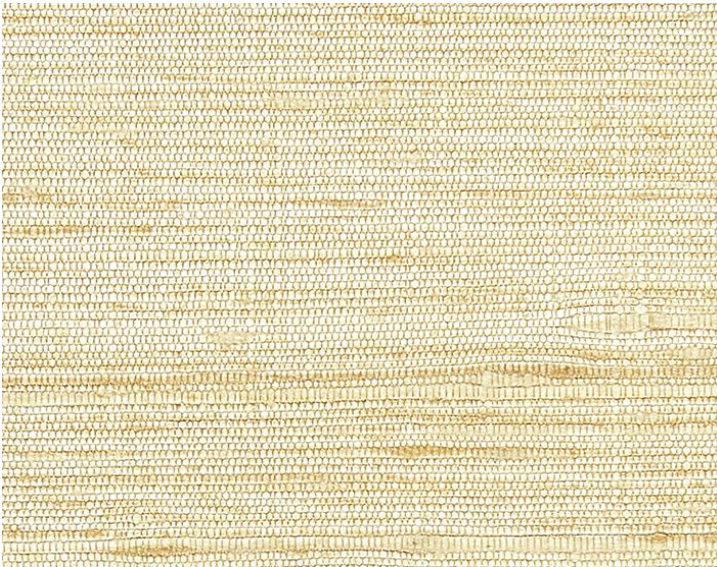
Textile Wallcoverings from the Silk & Linen Collection by Scalamandré



APPROX. MATERIAL WIDTH	43" / 109.22 cm WIDE WIDTH
MATCH	RANDOM
CONTENT	50% SILK 50% PAPER
FINISH	STAIN REPELLANT FINISH TRIMMED
PERFORMANCE / .. CONTRACT	FLAME RETARDANT (FR) WIDE WIDTH FR
FIRECODE	ASTM E84, CLASS A (ADHERED)
MADE IN	NETHERLANDS
DESIGN	TEXTURE
SCALE	PLAIN / SOLID

DESIGN INSPIRATION

This hand woven silk weave uses two shades of slubbed yarns to create a horizontal strié of color, for a rich paneled effect on the wall. The palette ranges from soft neutrals to dramatic red and indigo accented with black. The hand spun and hand dyed yarns feature naturally occurring irregularities and slubs, which add to its natural and textured appearance.



DETAIL IMAGE