

GABRIELLE WEAVE

LINEN • SC 0002 K65112

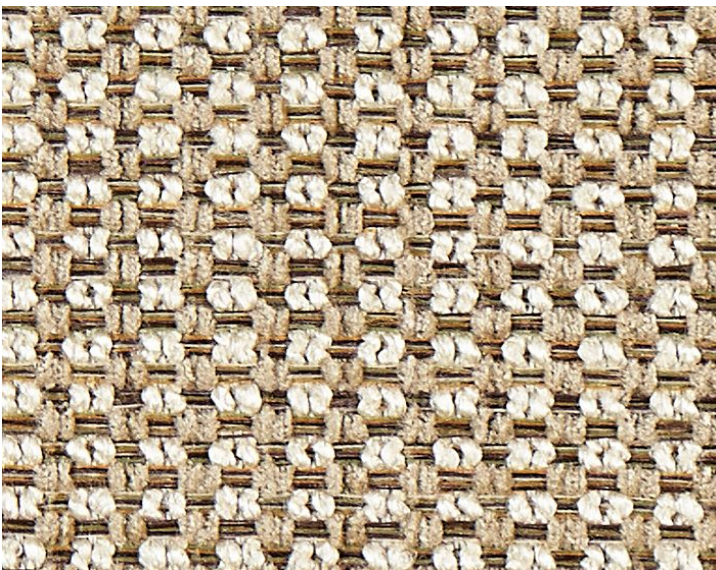
Plains / Textures from the Boris Kroll - Texture Palette Collection by Scalamandré



APPROX. MATERIAL WIDTH 57" / 144.78 cm
APPROX. REPEAT HORIZONTAL .25" / 0.64 cm
VERTICAL .25" / 0.64 cm
MATCH STRAIGHT
CONTENT 57% RAYON 35% POLYESTER 6% COTTON 2%
NYLON
ACRYLIC BACKED FOR UPHOLSTERY
SUGGESTED USE HEAVY DUTY UPHOLSTERY
PERFORMANCE / FLAME RETARDANT (FR)
CONTRACT HEAVY DUTY ABRASION
ABRASION 45,000 WYZENBEEK
FIRECODE UFAC CLASS 1
CLEANABILITY DRY CLEAN ONLY
MADE IN U.S.A.
STOCKED IN SCALAMANDRE WAREHOUSE U.S.A.
DESIGN TEXTURE
SCALE PLAIN / SOLID

DESIGN INSPIRATION

This tweedy fashion-inspired weave is named after Gabrielle "Coco" Chanel, and features a basket weave that blends bouclé and chenille yarns with a fine strié warp. The resulting effect is a textured checkerboard of color, perfect as a high-performing upholstery layer to blend with multicolored prints and patterned weaves.



DETAIL IMAGE