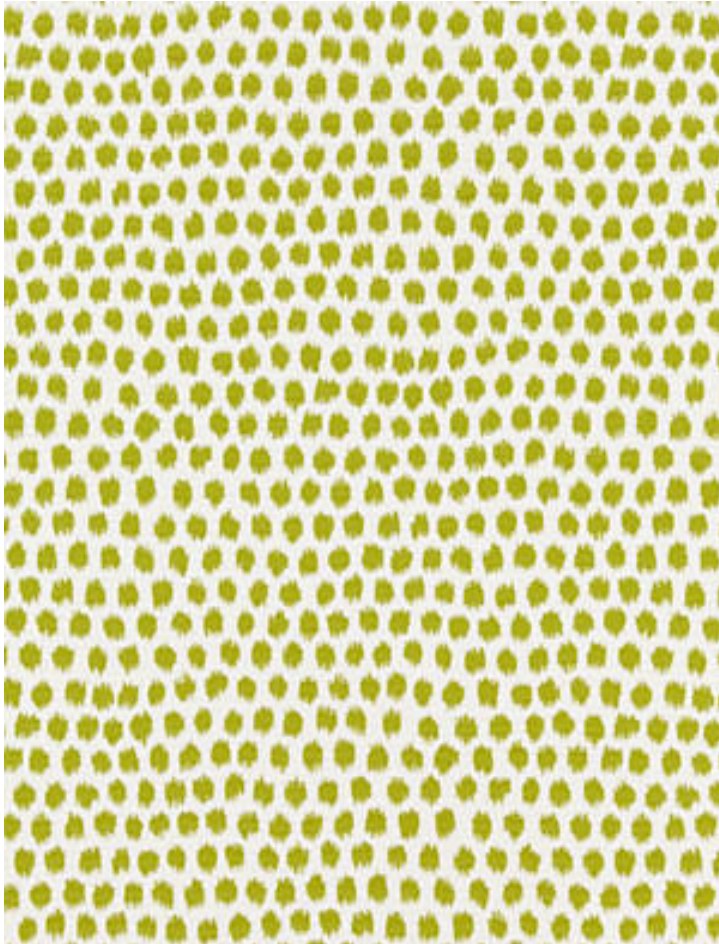


## DOT WEAVE

CHARTREUSE • SC 0002 27182

Jacquards / Wovens from the La Bohème Collection by Scalamandré



APPROX. MATERIAL WIDTH	52.75" / 133.99 cm
APPROX. REPEAT ..	HORIZONTAL 13" / 33.02 cm VERTICAL 19.625" / 49.85 cm
	REVERSIBLE
CONTENT .....	100% COTTON
SUGGESTED USE ..	MEDIUM DUTY MULTIPURPOSE
ABRASION .....	12,000 MARTINDALE
CLEANABILITY ....	DRY CLEAN ONLY
MADE IN .....	ITALY
STOCKED IN.....	SCALAMANDRE WAREHOUSE U.S.A.
DESIGN .....	DOTS / CIRCLES IKAT SMALL SCALE
SCALE .....	SMALL

### DESIGN INSPIRATION

This graphic dot pattern, inspired by an ikat woven textile, is woven in a washed matelassé quality for an incredibly soft and relaxed look. The dots of color contrast with ivory grounds, and the pattern reverses to ivory against colorful grounds. Dot Weave adds a snappy look to modern chair frames, and works beautifully as a coordinating partner to traditional prints and weaves.



DETAIL IMAGE