

CIRCLE FRET

FORSYTHIA • SC 0002 27072

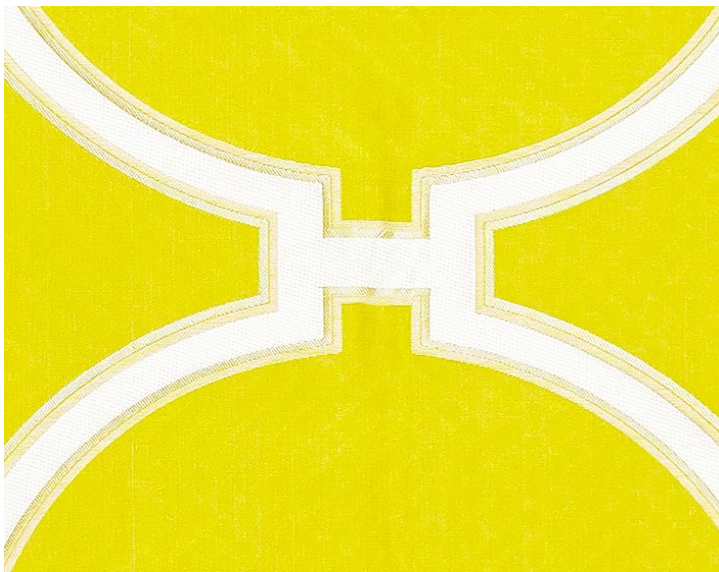
Jacquards / Wovens from the Jardin Collection by Scalamandré



APPROX. MATERIAL WIDTH	54" / 137.16 cm
APPROX. REPEAT ..	HORIZONTAL 9.375" / 23.81 cm VERTICAL 11" / 27.94 cm
CONTENT	50% VISCOSE 30% LINEN 20% POLYESTER
SUGGESTED USE ..	MEDIUM DUTY MULTIPURPOSE
ABRASION	10,000 MARTINDALE
CLEANABILITY	DRY CLEAN ONLY
MADE IN	INDIA
STOCKED IN	SCALAMANDRE WAREHOUSE U.S.A.
DESIGN	FRETWORK / LATTICE
SCALE	LARGE

DESIGN INSPIRATION

This chic circle-and-square fretwork design combines the high glamour of lustrous satin with the modern look of bold color and graphic pattern. Our updated weave features a textured effect in its satin ground, which is composed of a high-density polyester warp that gives the look of silk and the performance of a synthetic. The palette includes a quiet shade of ivory accented with pale blue for dreamy bedrooms and serene living spaces. Three more vibrant shades contrast with white, perfect for brightening a modern space or to beautifully accent Scalamandré's newest floral linen prints.



DETAIL IMAGE