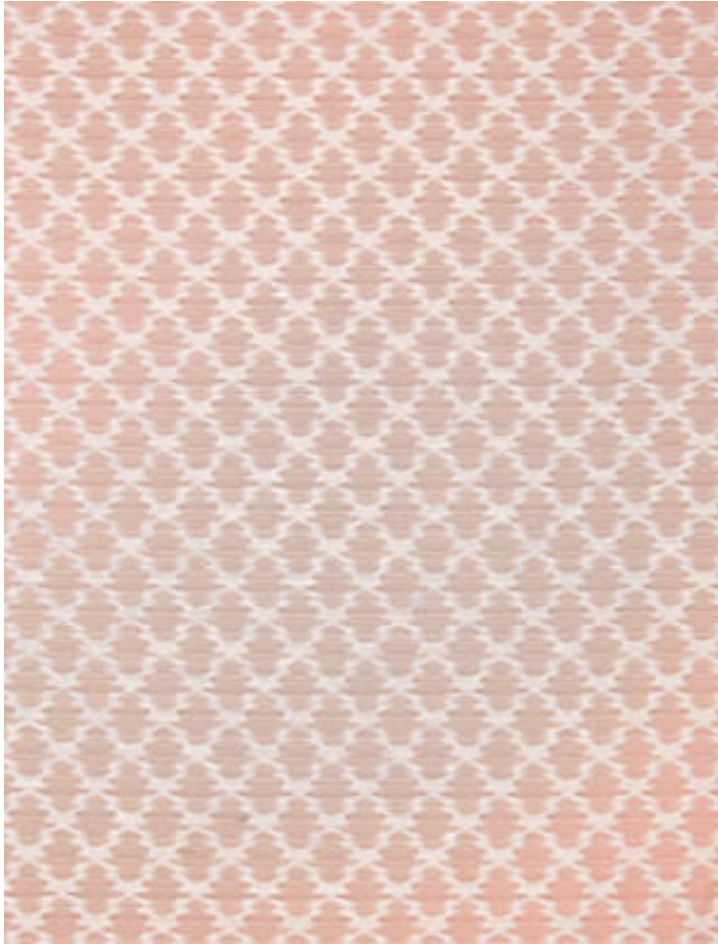




SAMARINDA IKAT

BLUSH • SC 0002 27035

Jacquards / Wovens from the Oriana Collection by Scalamandre



APPROX. MATERIAL WIDTH	55" / 139.70 cm
APPROX. REPEAT ..	HORIZONTAL 1.375" / 3.49 cm VERTICAL 1.5" / 3.81 cm
CONTENT	55% LINEN 25% VISCOSE 20% POLYESTER
SUGGESTED USE ..	LIGHT DUTY MULTIPURPOSE
ABRASION	11,000 MARTINDALE
CLEANABILITY	DRY CLEAN ONLY
MADE IN	INDIA
STOCKED IN	SCALAMANDRE WAREHOUSE U.S.A.
DESIGN	IKAT SMALL SCALE
SCALE	SMALL

DESIGN INSPIRATION

This versatile weave has a casual look that has the appearance of an exotic ikat warp printed pattern. Fine strié yarns in warp and weft are composed of high-density polyester for strength blended with viscose for subtle sheen. The variegated ground is contrasted with raised ivory linen yarns for a naturally textured effect. The small scale and wide ranging color palette of Samarinda Ikat makes it a very easy pattern to layer in a variety of interior spaces, as curtains, decorative accents or upholstery.



DETAIL IMAGE

To check stock and price, request a physical memo, reserve or place an order visit
www.scalamandre.com or call at 1.800.932.4361.