

MING FRETWORK

CLOUD • SC 0002 27012

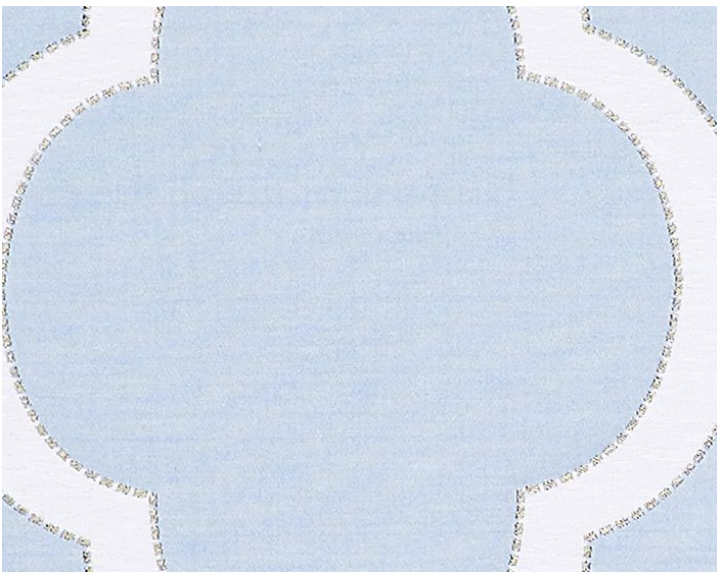
Jacquards / Wovens from the Oriana Collection by Scalamandré



APPROX. MATERIAL WIDTH	54" / 137.16 cm
APPROX. REPEAT ..	HORIZONTAL 27" / 68.58 cm VERTICAL 30" / 76.20 cm
CONTENT	45% VISCOSE 30% COTTON 25% LINEN
SUGGESTED USE ..	MEDIUM DUTY MULTIPURPOSE
ABRASION	15,000 MARTINDALE
CLEANABILITY	DRY CLEAN ONLY
MADE IN	INDIA
STOCKED IN	SCALAMANDRE WAREHOUSE U.S.A.
DESIGN	CHINOISERIE FRETWORK / LATTICE
SCALE	LARGE

DESIGN INSPIRATION

Inspired by garden fretwork or lattice patterns, this sumptuous ornamental fabric blends graceful geometry with a finely textured weave of linen, cotton and viscose. The decorative and symmetrical fret design is slightly raised from the surface with edges that are subtly accented with contrasting dotted line work. Colorations are soft and nature-inspired, providing versatile options for layering into traditional interiors. The tranquil palette also creates a gentle geometric statement in an otherwise minimal modern setting, when used on upholstered chairs or as floor length draperies.



DETAIL IMAGE