

# STACCATO - ABACA

HERON • SC 0001 WP88466

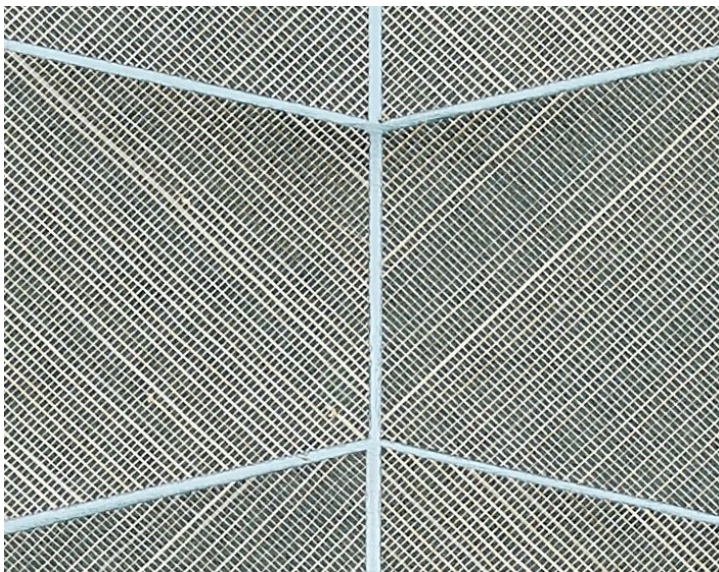
Grasscloths, Specialities / Metallics from the Rhythm & Line - Inlaid Wallcovering Collection by Scalamandre



APPROX. MATERIAL WIDTH	36" / 91.44 cm
APPROX. REPEAT ..	HORIZONTAL 9" / 22.86 cm VERTICAL 6" / 15.24 cm
MATCH .....	STRAIGHT
CONTENT .....	100% ABACA UNTRIMMED
FIRECODE .....	ASTM E84-CLASS A (ADHERED)
CLEANABILITY ....	VACUUM-CLEAN
MADE IN .....	CHINA
STOCKED IN.....	SUPPLIERS WAREHOUSE U.S.A.
DESIGN .....	GEOMETRIC GRAPHIC
SCALE .....	MEDIUM

#### DESIGN INSPIRATION

Pieces of handwoven abaca, or banana fiber, are inlaid with metallic to create Staccato - Abaca's geometric pattern. These textural materials have been cut on the bias, which creates a subtle linear rhythm within the larger geometry. This 100% abaca version uses the same color of inlaid abaca throughout for a more tonal look, while the two other versions of this pattern (one that is 100% sisal and another that is 50% abaca, 50% sisal) use contrasting colors for a more graphic effect.



DETAIL IMAGE