

CANYON

ICE • SC 0001 WP88366

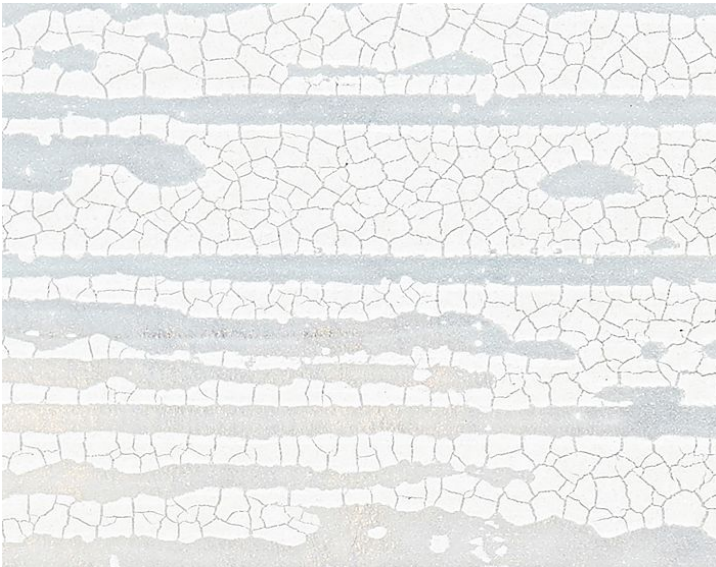
Specialities / Metallics from the Modern Luxury Collection by Scalamandre



APPROX. MATERIAL WIDTH 27" / 68.58 cm
MATCH RANDOM
CONTENT 50% PLASTIQUE 25% MYLAR 25% PAPER
UNTRIMMED
HANDCRAFTED: COLOR & TEXTURE VARIATION
INHERENT
NON-CANCELABLE ORDER
PERFORMANCE / .. FLAME RETARDANT (FR)
CONTRACT
FIRECODE ASTM E84, CLASS A (ADHERED)
CLEANABILITY WASHABLE, STRIPPABLE
MADE IN U.S.A.
STOCKED IN. SCALAMANDRE WAREHOUSE U.S.A.
DESIGN TEXTURE
SCALE MEDIUM

DESIGN INSPIRATION

This nature-inspired horizontal texture has a raised and finely cracked surface that contrasts with a tinted metallic ground. The mineral-like pattern and soft sheen creates an elegant and sophisticated backdrop for any modern room. Custom colors can be requested for a 30 yard minimum. Fabric or paint swatches can be matched or coordinated with, and a strike-off with a fee will be made for approval prior to production.



DETAIL IMAGE