

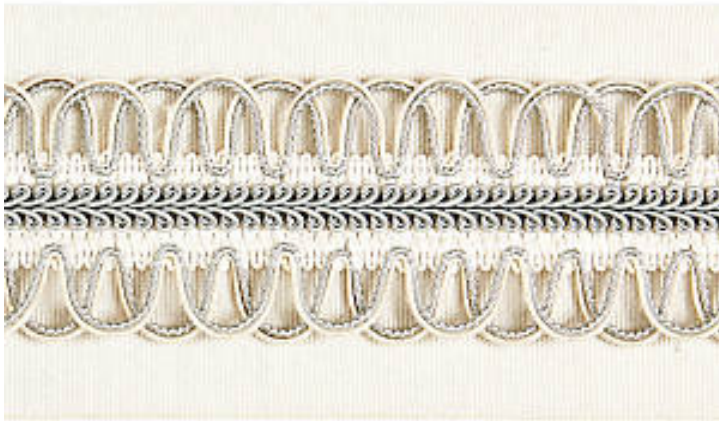
COLETTE BRAIDED TAPE

CLOUD • SC 0001 V1242

Tapes from the Botanica Collection by Scalamandré

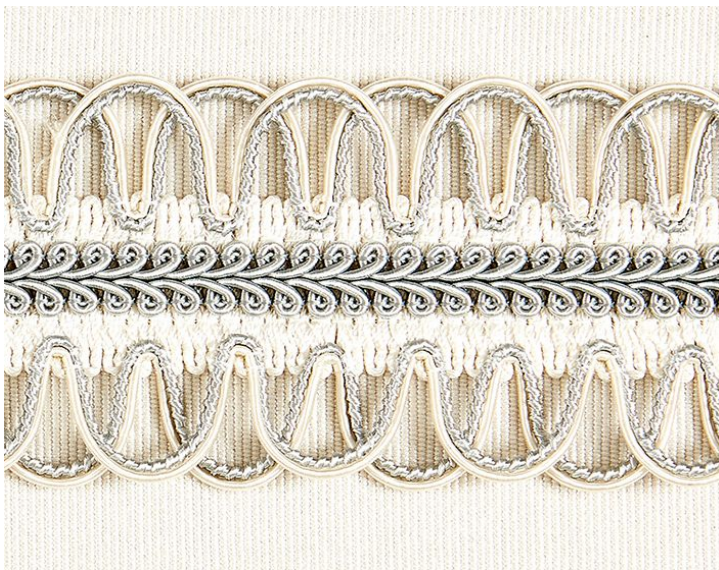
SHOWING 7" ACROSS

APPROX. MATERIAL WIDTH 3.625" / 9.21 cm
CONTENT 45% FIBRANNE 30% RAYON 15% COTTON
8% POLYAMIDE 2% POLYESTER
SUGGESTED USE . . LIGHT DUTY MULTIPURPOSE
CLEANABILITY DRY CLEAN ONLY
MADE IN CHINA
STOCKED IN SCALAMANDRE WAREHOUSE U.S.A.



DESIGN INSPIRATION

This pretty and refined tape blends traditional French gimp details of wrapped cording and scalloped openwork edging with the modern simplicity of a wide woven repp tape. It beautifully embellishes curtain panel edges, table skirts, and pillows, in a classic color palette that perfectly complements the fabrics in the Botanica collection.



DETAIL IMAGE

To check stock and price, request a physical memo, reserve or place an order visit
www.scalamandre.com or call at 1.800.932.4361.