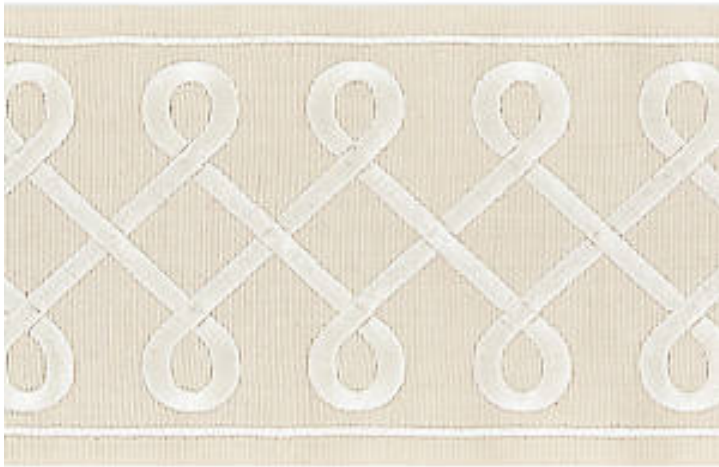


# SOUTACHE EMBROIDERED TAPE

SAND • SC 0001 T3281

Tapes from the Oriana Collection by Scalamandré

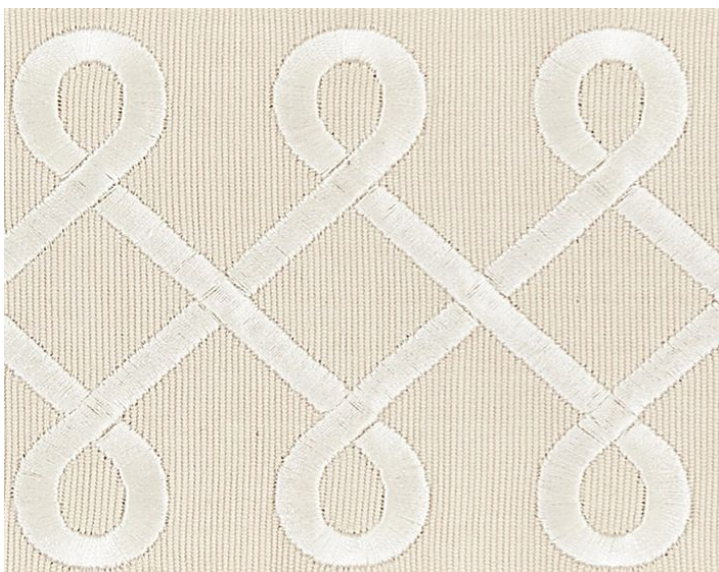
SHOWING 7" ACROSS



APPROX. MATERIAL WIDTH 4.5" / 11.43 cm  
APPROX. REPEAT . . . VERTICAL 1.625" / 4.13 cm  
CONTENT . . . . . 85% COTTON 15% RAYON 100% COTTON  
EMBROIDERY CONTENT . . . 100% VISCOSE  
SUGGESTED USE . . . LIGHT DUTY MULTIPURPOSE  
CLEANABILITY . . . . DRY CLEAN ONLY  
MADE IN . . . . . INDIA  
STOCKED IN . . . . . SCALAMANDRE WAREHOUSE U.S.A.  
DESIGN . . . . . SCROLL

#### DESIGN INSPIRATION

The elegant loop design of this cotton tape is inspired by soutache, which is the flat decorative braid used to elaborately embellish clothing, especially uniforms. This simple and chic border is embroidered in creamy white viscose thread against a full array of soft and dramatic background hues, which are perfect for trimming curtains, pillows and cushions.



DETAIL IMAGE