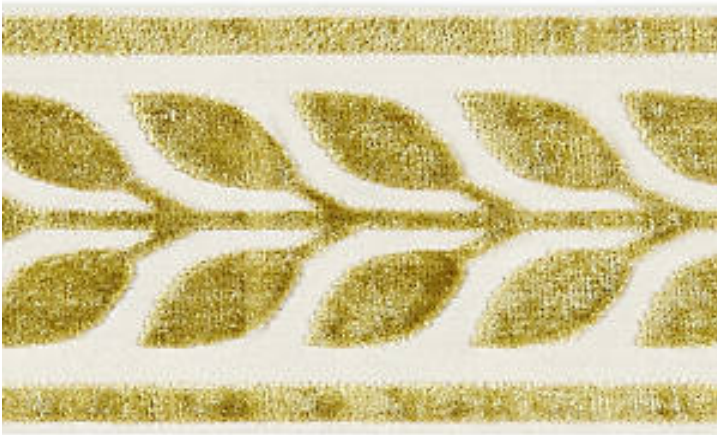


VIGNE VELVET TAPE

VERT • SC 0001 T3278

Velvets, Tapes from the Oriana Collection by Scalamandré

SHOWING 7" ACROSS



APPROX. MATERIAL WIDTH 4.125" / 10.48 cm
APPROX. REPEAT .. VERTICAL 1.5" / 3.81 cm
CONTENT 50% VISCOSE 50% COTTON 100% COTTON
SUGGESTED USE .. LIGHT DUTY MULTIPURPOSE
CLEANABILITY DRY CLEAN ONLY
MADE IN INDIA
STOCKED IN. SCALAMANDRE WAREHOUSE U.S.A.
DESIGN BOTANICAL / FOLIAGE

DESIGN INSPIRATION

The classical Greek laurel leaf border is interpreted in silky cut velvet on a cotton satin ground, to create this timelessly elegant tape. The soft colorations layer beautifully with woven plains and textures to add a quiet accent of pattern in a traditional interior, on curtain panels, chair backs, pillows and bed, chair or table skirts.



DETAIL IMAGE