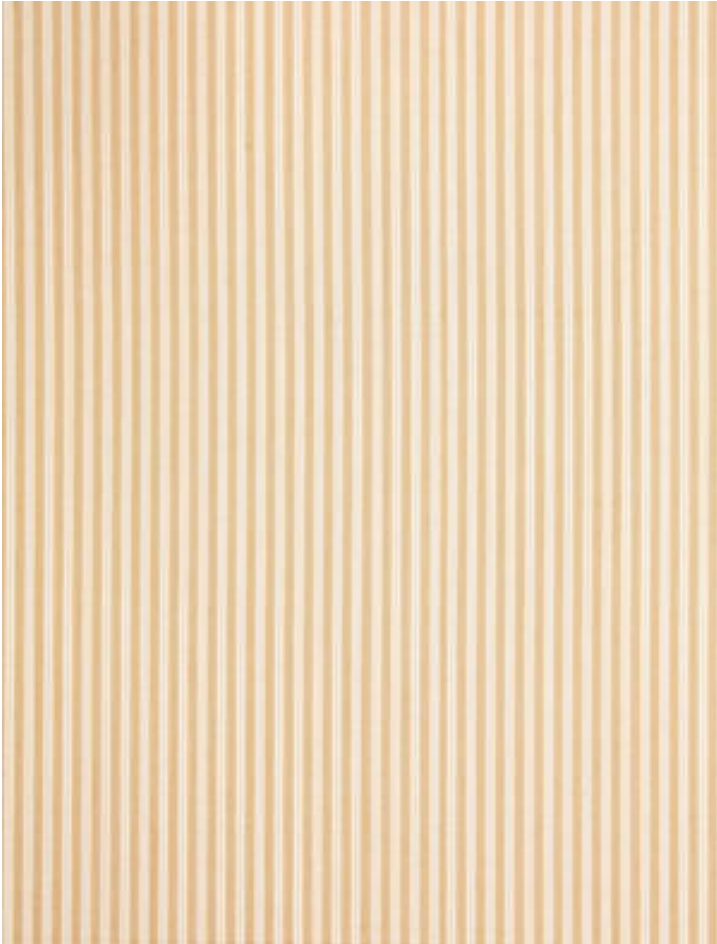


KENT STRIPE

BISCUIT • SC 0001 36395

Jacquards / Wovens from the Chatham Collection by Scalamandr 

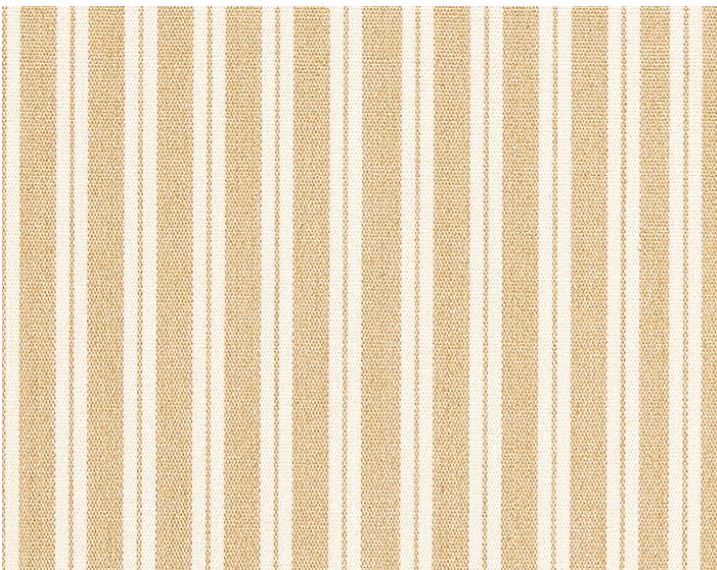


APPROX. MATERIAL WIDTH 54" / 137.16 cm
APPROX. REPEAT .. HORIZONTAL .25" / 0.64 cm

CONTENT 100% COTTON
SUGGESTED USE .. LIGHT DUTY MULTIPURPOSE
CLEANABILITY DRY CLEAN ONLY
MADE IN INDIA
STOCKED IN. SCALAMANDRE WAREHOUSE U.S.A.
DESIGN STRIPE
SCALE SMALL

DESIGN INSPIRATION

Ticking stripes are traditional fabrics that feature tight weaves and small uniform stripes, and are versatile for use in a variety of interior applications, including upholstery, curtains, bed skirts and cushion covers. Kent Stripe's classic and crisp cotton taffeta weave features a simple one-color stripe in a range of colors that focus on neutrals, all designed to coordinate easily with toiles, linen prints, chintz and patterned weaves.



DETAIL IMAGE