

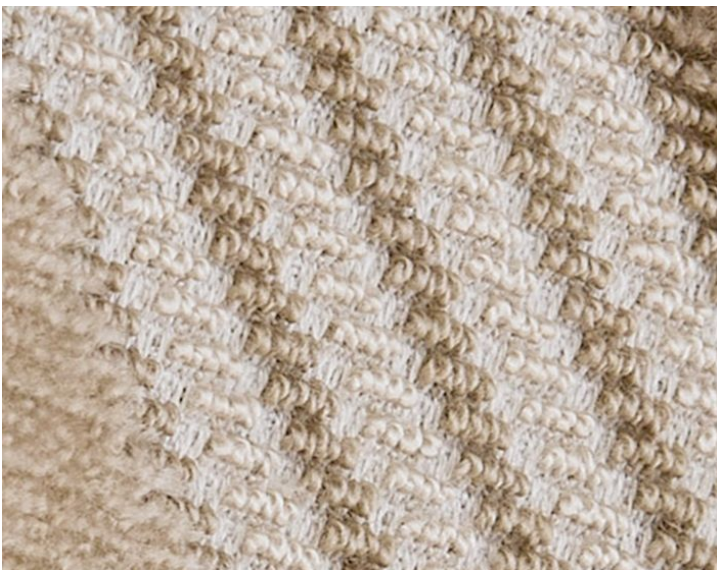
KASAI VELVET

SANDSTONE • SC 0001 27323

Velvets from the The Metropolitan Museum Of Art Collection by Scalamandre



APPROX. MATERIAL WIDTH 55" / 139.70 cm
APPROX. REPEAT .. HORIZONTAL 6.75" / 17.15 cm
VERTICAL 13" / 33.02 cm
MATCH STRAIGHT
CONTENT 72% COTTON 28% VISCOSE
VELVET PILE CONTENT... 52% COTTON 48% VISCOSE
SUGGESTED USE .. MEDIUM DUTY MULTIPURPOSE
ABRASION 75,000 MARTINDALE
CLEANABILITY DRY CLEAN ONLY
MADE IN INDIA
STOCKED IN..... SCALAMANDRE WAREHOUSE U.S.A.
DESIGN GEOMETRIC
GRAPHIC
SCALE MEDIUM



DETAIL IMAGE

THE HOUSE OF
Scalamandré

KASAI VELVET

SANDSTONE • SC 0001 27323

Velvets from the The Metropolitan Museum Of Art Collection by Scalamandré

DESIGN INSPIRATION

Scalamandré

THE
MET

Our Kasai Velvet takes inspiration from a [woman's overskirt made by the Kuba peoples](#) of the Democratic Republic of the Congo. Kuba textiles are a long-standing tradition, significant as emblems of rank and noted for the complexity of their design and surface decoration. Featuring a raffia tabby weave, The Met's textile is transformed into a unique, soft velvet.

Kasai Velvet adapts the geometric and linear motifs on the original and for a luxe and multi-dimensional textile. Its cotton-and-viscose composition and varying pile affords both a shine and matte effect.

[View pairings from the Scalamandré line for this pattern.](#)

[VIEW THE COLLECTION.](#)

To check stock and price, request a physical memo, reserve or place an order visit
www.scalamandre.com or call at 1.800.932.4361.