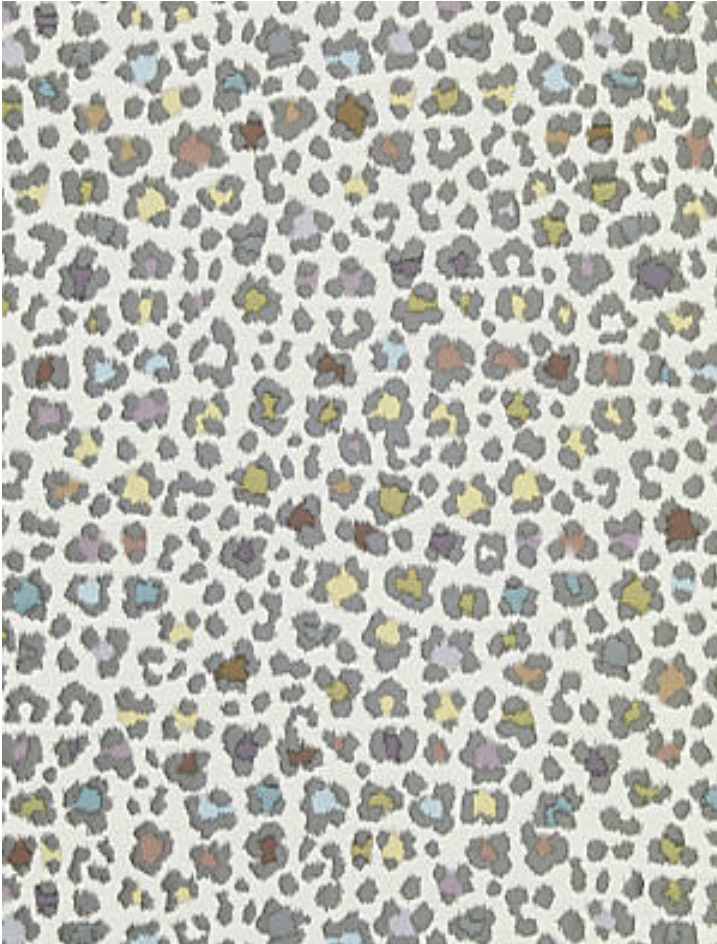


ROSETTE WOVEN

HAZE • SC 0001 27252

Jacquards / Wovens from the Sahara Collection by Scalamandre



APPROX. MATERIAL WIDTH	55" / 139.70 cm
APPROX. REPEAT ..	HORIZONTAL 28.7" / 72.90 cm VERTICAL 27.5" / 69.85 cm
MATCH	STRAIGHT
CONTENT	75% POLYESTER 25% COTTON
SUGGESTED USE ..	LIGHT DUTY MULTIPURPOSE
ABRASION	15,000 WYZENBEEK
CLEANABILITY	DRY CLEAN ONLY
MADE IN	ITALY
STOCKED IN	SCALAMANDRE WAREHOUSE U.S.A.
DESIGN	ANIMAL SKIN
SCALE	MEDIUM

DESIGN INSPIRATION

Named for the rose-like markings of wild cats, Rosette Woven is a fresh take on a classic animal-skin design. This fine jacquard woven offers subtle texture and pops of color created by a range of carefully selected weft yarns. Graphic yet balanced, this playful pattern makes for rockstar-status dining room chairs or irresistible sofa pillows.



DETAIL IMAGE