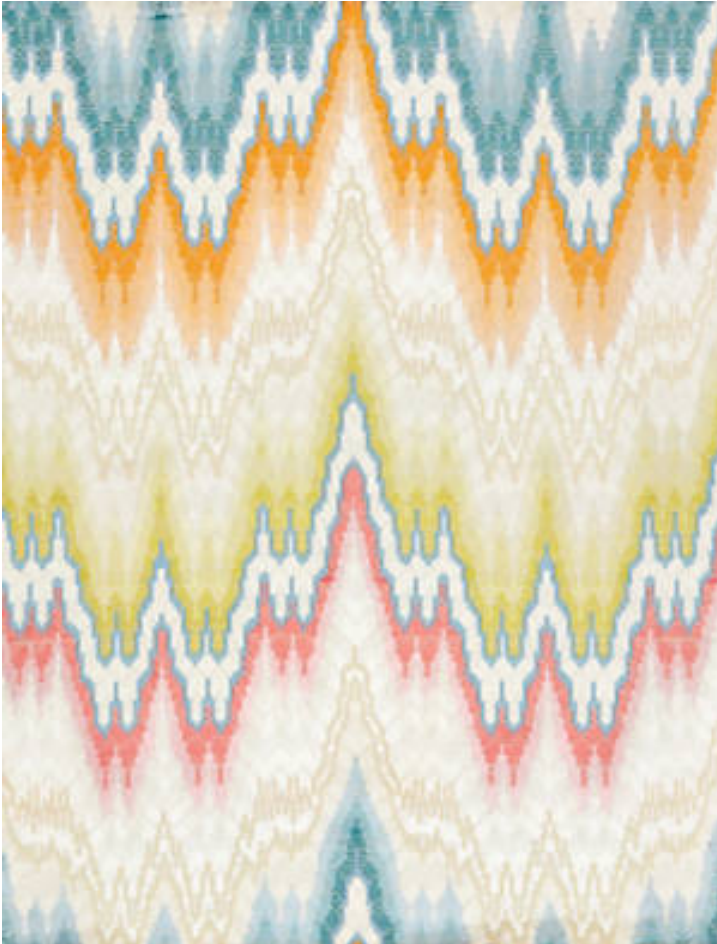


BARGELLO

BLOOM • SC 0001 27070

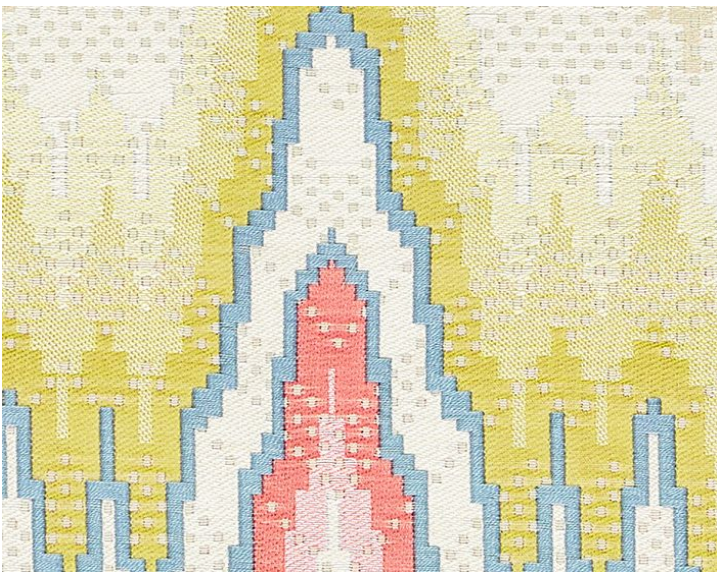
Jacquards / Wovens from the Jardin Collection by Scalamandré



APPROX. MATERIAL WIDTH 54" / 137.16 cm
APPROX. REPEAT .. HORIZONTAL 13.375" / 33.97 cm
VERTICAL 34.625" / 87.95 cm
CONTENT 70% COTTON 30% VISCOSE
SUGGESTED USE .. HEAVY DUTY MULTIPURPOSE
PERFORMANCE / .. HEAVY DUTY ABRASION
CONTRACT
ABRASION 50,000 WYZENBEEK
CLEANABILITY DRY CLEAN ONLY
MADE IN INDIA
STOCKED IN SCALAMANDRE WAREHOUSE U.S.A.
DESIGN CHEVRON / HERRINGBONE
SCALE LARGE

DESIGN INSPIRATION

This statement upholstery weave updates the classic Italian bargello or flamesitch design with a dramatic large scale and a fresh color palette. The addition of viscose to the soft cotton quality gives it a subtle luster for a polished look. Bargello is the perfect geometric partner for this season's floral prints, when used on upholstered chairs, settees or decorative pillows.



DETAIL IMAGE