

HOPSACK

WHELK • SC 0001 27066

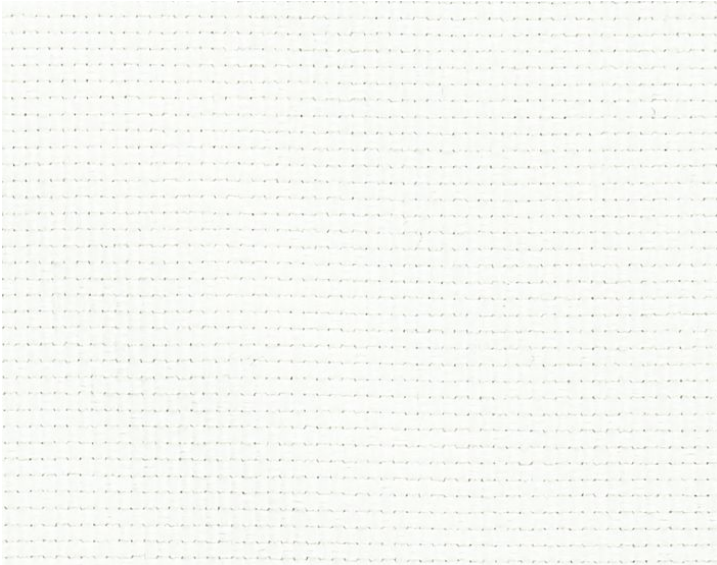
Plains / Textures from the Endless Summer - Indoor/outdoor Collection by Scalamandre



APPROX. MATERIAL WIDTH	57" / 144.78 cm
CONTENT	100% POLYPROPYLENE
FINISH.	ANTIMICROBIAL, WATER AND STAIN REPELLENT
SUGGESTED USE . .	HEAVY DUTY UPHOLSTERY
PERFORMANCE / .. CONTRACT	FLAME RETARDANT (FR) HEAVY DUTY ABRASION INDOOR / OUTDOOR
ABRASION	40,000 MARTINDALE
FIRECODE	CAL 117, CLASS 1 (UPH)
LIGHT FASTNESS . .	MEETS OR EXCEEDS 1,500 HOURS 3 YEAR WARRANTY AGAINST FADING
CLEANABILITY	WASHABLE, BLEACH CLEANABLE
MADE IN	BELGIUM
STOCKED IN.	SCALAMANDRE WAREHOUSE U.S.A.
DESIGN	PLAIN / SOLID TEXTURE
SCALE	PLAIN / SOLID

DESIGN INSPIRATION

This chunky plain weave is composed of high-performing synthetic yarns that mimic the appearance of natural linen, in colors blended with bleached and unbleached flax shades. The soft hand belies its high durability, stain repellency and lightfastness, making it an ideal option for upholstery in not only outdoor spaces but also in active indoor settings. Hopsack coordinates beautifully with Nautical Stripe in weave and color, as well as the complete range of Endless Summer fabrics.



DETAIL IMAGE