

# COQUILLE SHEER

IVORY • SC 0001 27038

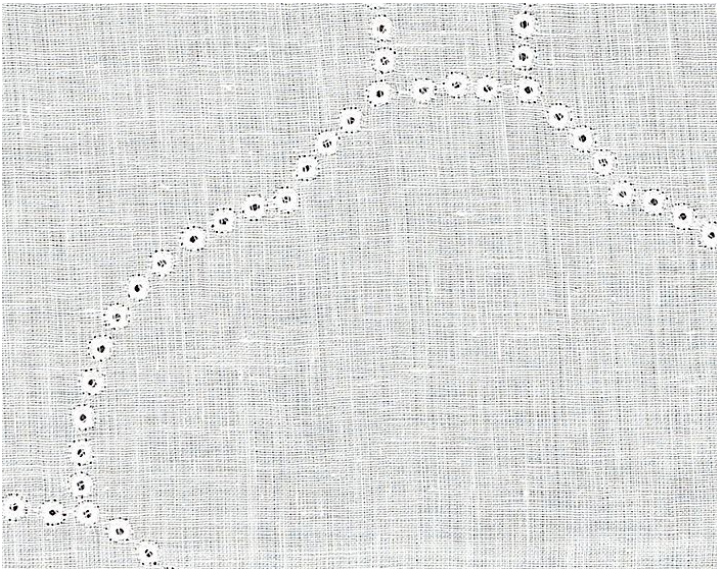
Embroideries, Sheers from the Atmosphere Sheers Collection by Scalamandre



APPROX. MATERIAL WIDTH 49" / 124.46 cm  
APPROX. REPEAT .. HORIZONTAL 8.125" / 20.64 cm  
VERTICAL 7.875" / 20.00 cm  
CONTENT ..... 87% LINEN 13% VISCOSE  
SUGGESTED USE .. LIGHT DUTY SHEER  
MADE IN ..... INDIA  
STOCKED IN ..... SCALAMANDRE WAREHOUSE U.S.A.  
DESIGN ..... DIAMOND / OGEE  
SCALE ..... MEDIUM

#### DESIGN INSPIRATION

This fine linen sheer is accented with a scallop design that is created with delicate eyelet embroidery. The two neutral-natural colorations of ivory and flax layer easily into a wide range of traditional interiors, as curtain panels or soft roman shades.



DETAIL IMAGE