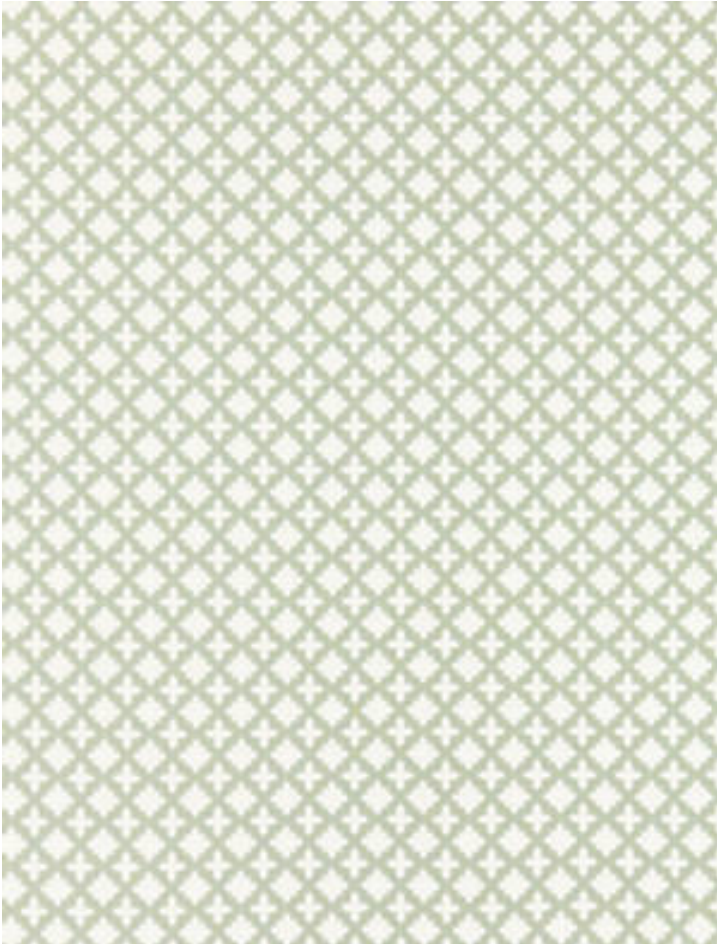


MARRAKESH WEAVE

AQUAMARINE • SC 0001 27034

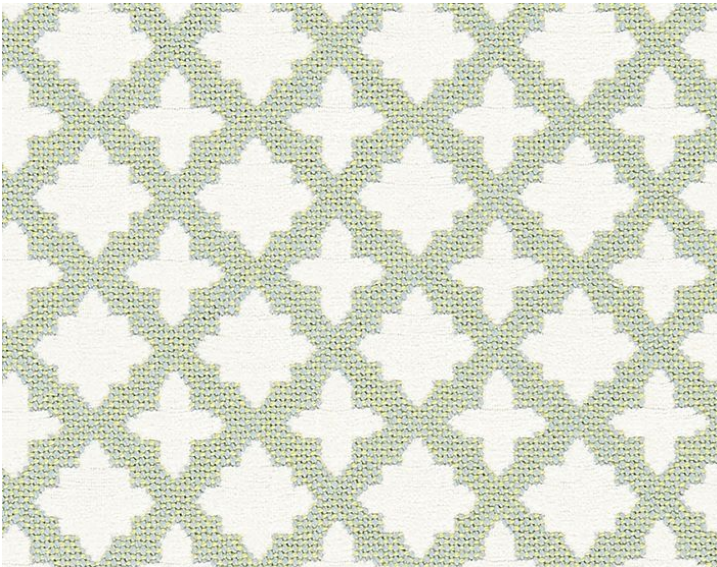
Jacquards / Wovens from the Oriana Collection by Scalamandre



APPROX. MATERIAL WIDTH 54" / 137.16 cm
APPROX. REPEAT .. HORIZONTAL 1.625" / 4.13 cm
VERTICAL 1.625" / 4.13 cm
REVERSIBLE
CONTENT 53% COTTON 28% LINEN 19% VISCOSE
KNIT BACKING RECOMMENDED FOR LIGHT UPHOLSTERY USE
SUGGESTED USE .. MEDIUM DUTY UPHOLSTERY
ABRASION 18,000 MARTINDALE
CLEANABILITY DRY CLEAN ONLY
MADE IN BELGIUM
STOCKED IN. SCALAMANDRE WAREHOUSE U.S.A.
DESIGN GEOMETRIC
GRAPHIC
SMALL SCALE
SCALE SMALL

DESIGN INSPIRATION

Small-scale patterns are perfect layers for creating interest in an interior, bridging plains or textures and more dramatic patterns. A classic Moroccan star tile design adds geometry to a dense weave of cotton chenille, linen and viscose in this exceptionally supple upholstery fabric, which has been washed for extra softness. The color palette includes both graphic and quiet hues, providing many choices for upholstered chairs, benches and ottomans in modern and classic interiors.



DETAIL IMAGE