

TRELLIS WEAVE

SAND • SC 0001 27009

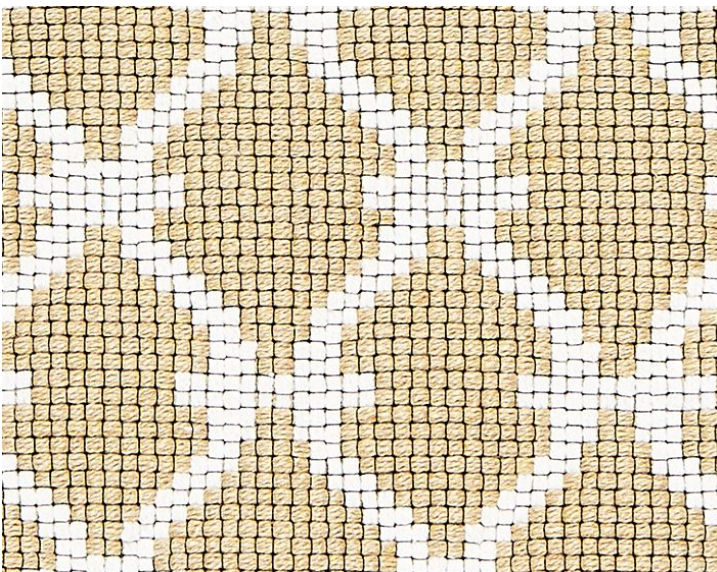
Jacquards / Wovens from the Oriana Collection by Scalamandré



APPROX. MATERIAL WIDTH	53" / 134.62 cm
APPROX. REPEAT ..	HORIZONTAL 1.75" / 4.45 cm VERTICAL 2.125" / 5.40 cm
CONTENT	77% COTTON 20% POLYESTER 3% NYLON
FINISH.....	STAIN REPELLENT FINISH
SUGGESTED USE ..	HEAVY DUTY UPHOLSTERY
ABRASION	30,000 WYZENBEEK
MADE IN	U.S.A.
STOCKED IN	SCALAMANDRE WAREHOUSE U.S.A.
DESIGN	FRETWORK / LATTICE SMALL SCALE
SCALE	SMALL

DESIGN INSPIRATION

This modern, small scale trellis pattern is created in a jacquard weave that resembles grospoint needlework. The densely textured upholstery fabric is woven in the USA, composed entirely of US-made yarns that are created from recycled cotton apparel and dyed into heathery shades. Trellis Weave will add a jazzy note of geometry or pop of bold color to a traditional or modern setting, when used on a upholstered bench, chair or settee.



DETAIL IMAGE