

# PRIMAVERA LINEN PRINT

BLUSH • SC 0001 16597

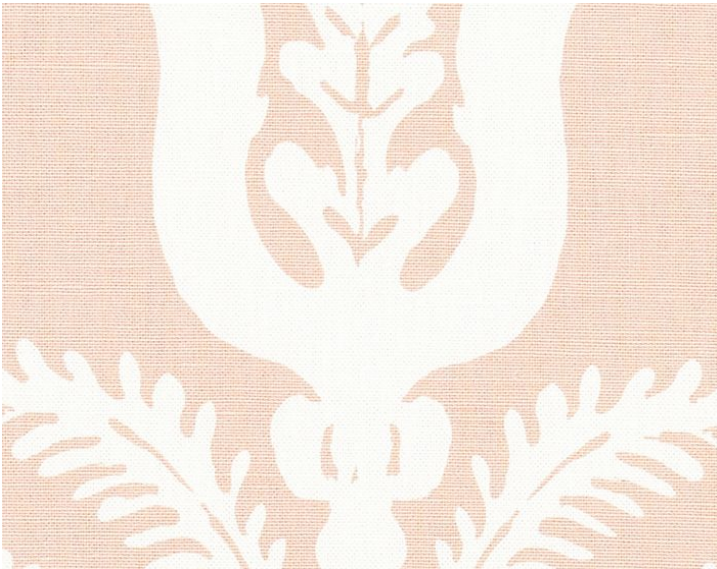
Printed Fabrics from the Botanica Collection by Scalamandre



APPROX. MATERIAL WIDTH 57" / 144.78 cm  
APPROX. REPEAT .. HORIZONTAL 28" / 71.12 cm  
VERTICAL 25.25" / 64.14 cm  
CONTENT ..... 52% LINEN 48% COTTON  
SUGGESTED USE .. LIGHT DUTY MULTIPURPOSE  
CLEANABILITY .... DRY CLEAN ONLY  
MADE IN ..... SWITZERLAND  
STOCKED IN ..... SCALAMANDRE WAREHOUSE U.S.A.  
DESIGN ..... DAMASK  
SCALE ..... LARGE

#### DESIGN INSPIRATION

This joyous print interprets floral and foliage motifs in a painterly hand and classical symmetry, for a new twist on damask. The lively design is drawn in pale ivory against pretty garden shades and graphic navy. The scale is well suited to upholstered chair backs and seats, pillows and graceful draperies.



DETAIL IMAGE