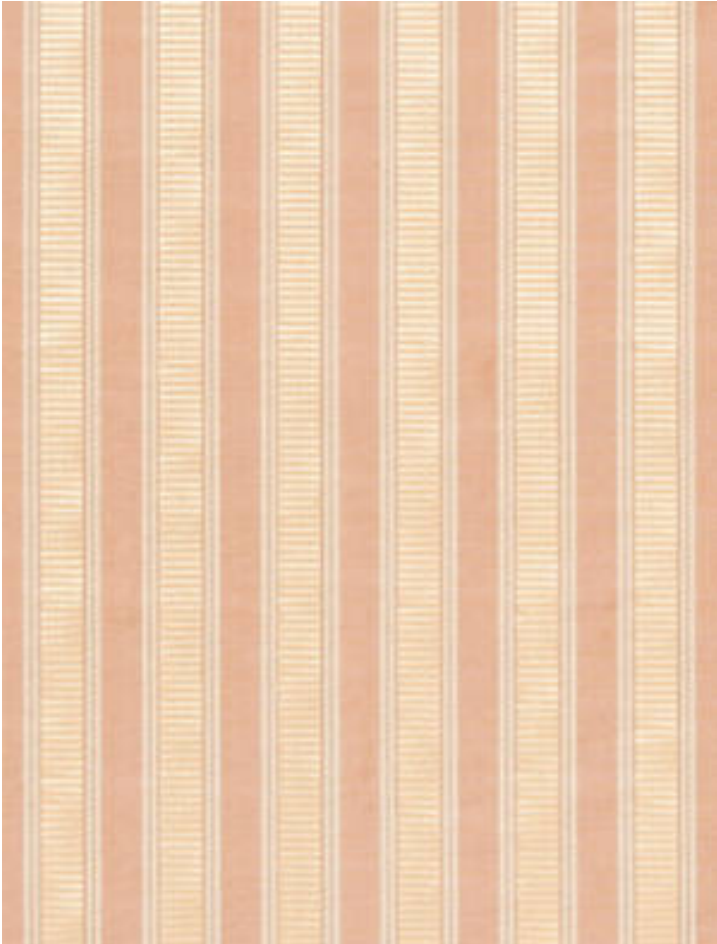


SHIRRED STRIPE

PEACH & BEIGE • SC 0001 121M

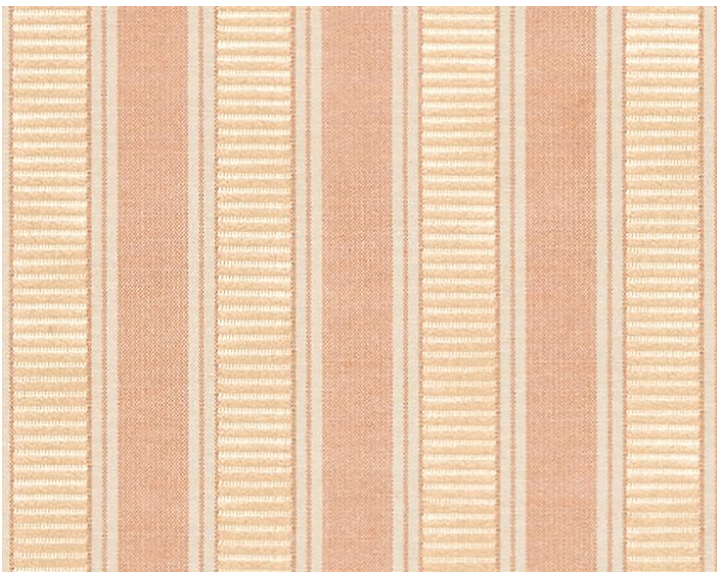
Jacquards / Wovens from the Silk Spectrum Collection by Scalamandré



APPROX. MATERIAL WIDTH 54" / 137.16 cm
APPROX. REPEAT . . . HORIZONTAL 1" / 2.54 cm
VERTICAL 0" / 0 cm
CONTENT 100% SILK
PUCKERING IS CHARACTERISTIC
SUGGESTED USE . . . LIGHT DUTY MULTIPURPOSE
CLEANABILITY DRY CLEAN ONLY
MADE IN INDIA
STOCKED IN SCALAMANDRE WAREHOUSE U.S.A.
DESIGN SMALL SCALE
STRIPE
SCALE SMALL

DESIGN INSPIRATION

One of the oldest patterns still active in the Scalamandré line, Shirred Stripe is a timeless, up-the-roll, two-toned silk stripe with subtle sheen and dimension. Originally woven at the Scalamandré mill in Long Island, this classic quality exemplifies the timelessness of Scalamandré fabrics.



DETAIL IMAGE