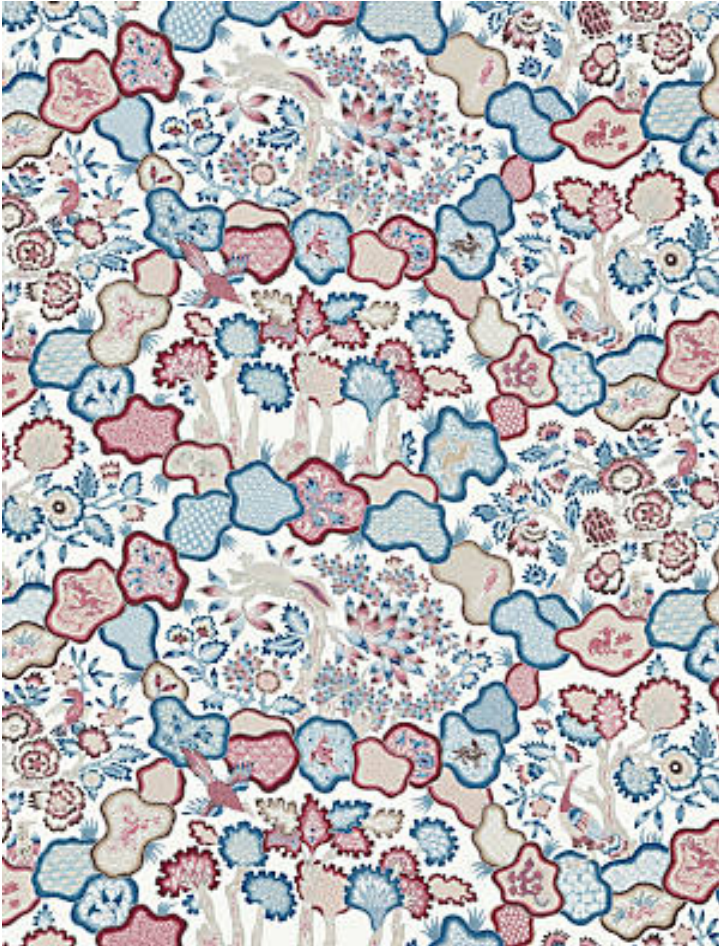


ZIBA

PEACOCK ROSE • JP 0001 4659

Printed Fabrics from the Malay Collection by Old World Weavers



APPROX. MATERIAL WIDTH	51" / 129.54 cm
APPROX. REPEAT ..	HORIZONTAL 25.5" / 64.77 cm VERTICAL 22.25" / 56.52 cm
MATCH	HALF DROP
CONTENT	100% LINEN
FINISH.....	CHINTZ
SUGGESTED USE ..	LIGHT DUTY DRAPERY
CLEANABILITY	DRY CLEAN ONLY
MADE IN	UNITED KINGDOM
STOCKED IN.....	SCALAMANDRE WAREHOUSE U.S.A.
DESIGN	BIRD / ANIMAL BOTANICAL / FOLIAGE
SCALE	MEDIUM

DESIGN INSPIRATION

This is a charming Indonesian batik pattern with mystical, quirky animals hiding within the pattern. The drawing of the trees and animals is fanciful and amusing. There are three unique scenic ovals, each with enough variety to keep your attention.



DETAIL IMAGE