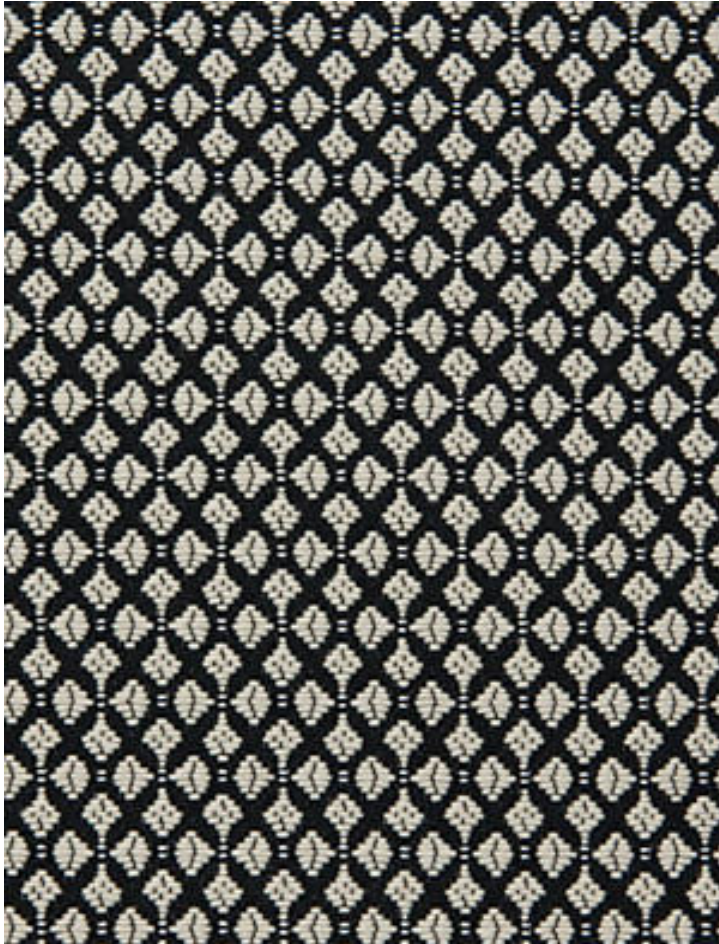


CLUB M1

PANGARE • H0 L001 0797

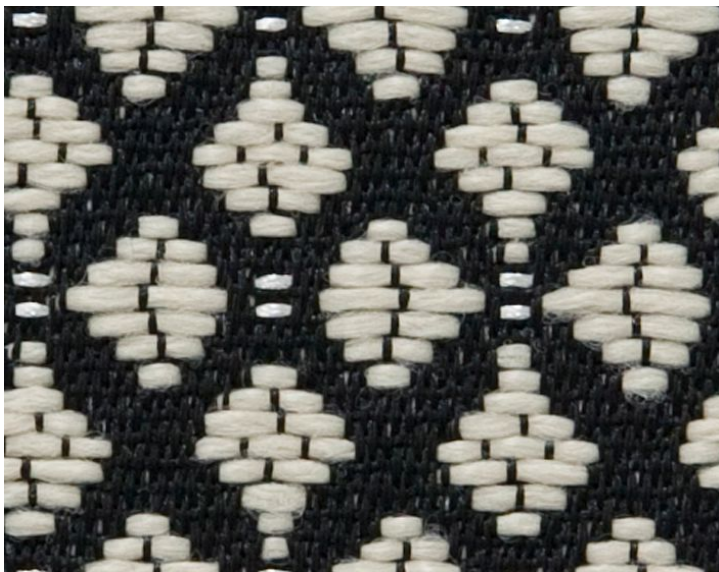
Jacquards / Wovens from the Contract 23 Collection by Lelièvre Paris



APPROX. MATERIAL WIDTH	55" / 139.70 cm
APPROX. REPEAT ..	HORIZONTAL 0.75" / 1.91 cm VERTICAL 0.875" / 2.22 cm
MATCH	STRAIGHT
CONTENT	100% POLYESTER FR
SUGGESTED USE ..	HEAVY DUTY MULTIPURPOSE
PERFORMANCE / .. CONTRACT	FLAME RETARDANT (FR) HEAVY DUTY ABRASION
ABRASION	60,000 MARTINDALE
FIRECODE	M1
CLEANABILITY	DRY CLEAN ONLY
MADE IN	INDIA
STOCKED IN	SUPPLIERS WAREHOUSE EUROPE
DESIGN	GEOMETRIC SMALL SCALE
SCALE	SMALL

DESIGN INSPIRATION

Club is a two-tone fabric with a small pattern inspired by a gentlemen's cloakroom with an equestrian feel. The clean, dry weft is reminiscent of woven horsehair, and the untreated look is accentuated by a range of natural colors. Use for hardwearing seating, accessories and curtains.



DETAIL IMAGE