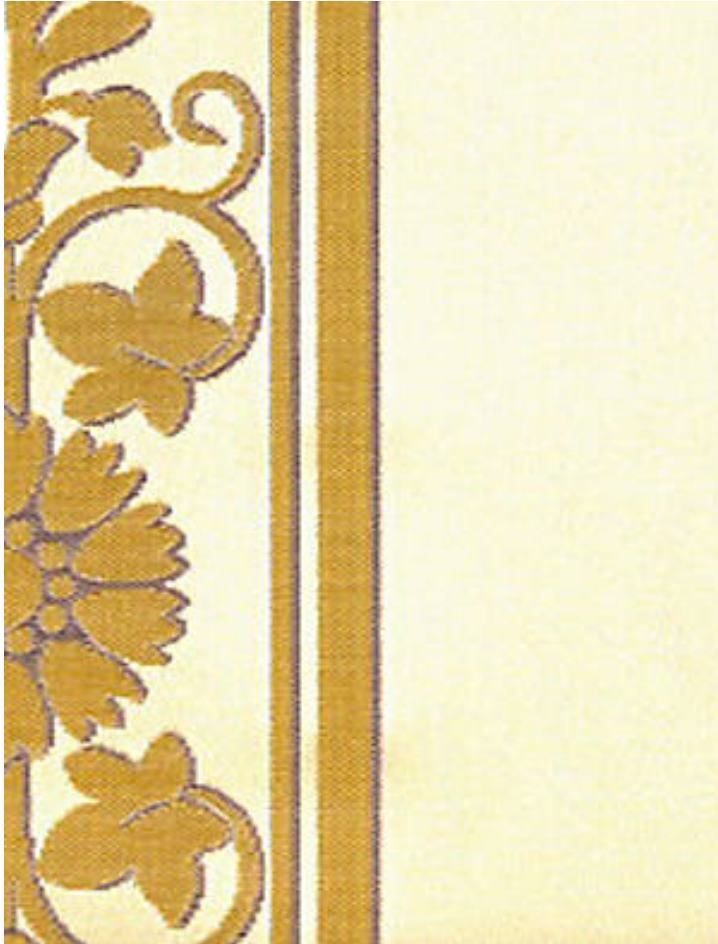


# MURAT BORDURE

CREME • H0 0002 1563

Jacquards / Wovens from the Patrimoine Collection by Tassinari & Chatel



APPROX.	51" / 129.54 cm
MATERIAL WIDTH	
MATCH . . . . .	STRAIGHT
CONTENT . . . . .	100% SILK
SUGGESTED USE . .	LIGHT DUTY MULTIPURPOSE
MADE IN . . . . .	FRANCE
STOCKED IN . . . . .	SUPPLIERS WAREHOUSE EUROPE
DESIGN . . . . .	HISTORIC STRIPE
SCALE . . . . .	LARGE

## DESIGN INSPIRATION

A typically empire style design of stripes composed of leaves and rosettes which can be used to complement the seat and back design Murat on the sides of cushions. It can equally be used on its own as a stripe or as a border on the same background or plain satin for curtains.



DETAIL IMAGE