

# KATMANDOU

GRANIT • H0 0001 4251

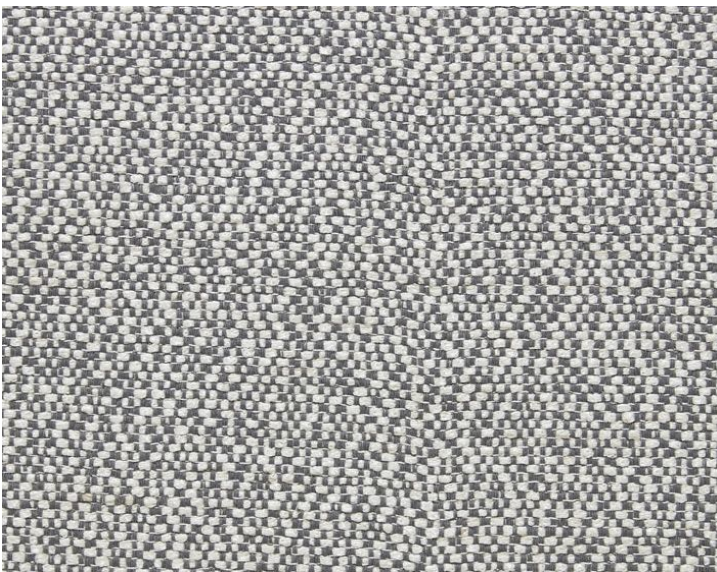
Jacquards / Wovens from the Himalaya Collection by Lelièvre Paris



APPROX. MATERIAL WIDTH 53.54" / 135.99 cm  
APPROX. REPEAT .. HORIZONTAL 0" / 0 cm  
VERTICAL 0" / 0 cm  
MATCH ..... STRAIGHT  
CONTENT ..... 61% VISCOSE 31% COTTON 5% LINEN  
2% POLYESTER 1% POLYAMIDE  
SUGGESTED USE .. MEDIUM DUTY MULTIPURPOSE  
ABRASION ..... 40,000 MARTINDALE  
CLEANABILITY .... DRY CLEAN ONLY  
MADE IN ..... FRANCE  
STOCKED IN. .... SUPPLIERS WAREHOUSE EUROPE  
DESIGN ..... TEXTURE  
SCALE ..... LARGE

#### DESIGN INSPIRATION

This structured, semi-plain, yet sophisticated weave is inspired by hand-made fabrics from local mountain artisans. Offered in several colors ranging from subtle plant-based shades to bold, contrasting hues, Katmandou gives any interior space a slight softness and character. This luxe natural fabric is ideal for use on chairs and home accessories.



DETAIL IMAGE