

DIAMANT M1

LAPIS • H0 0001 4248

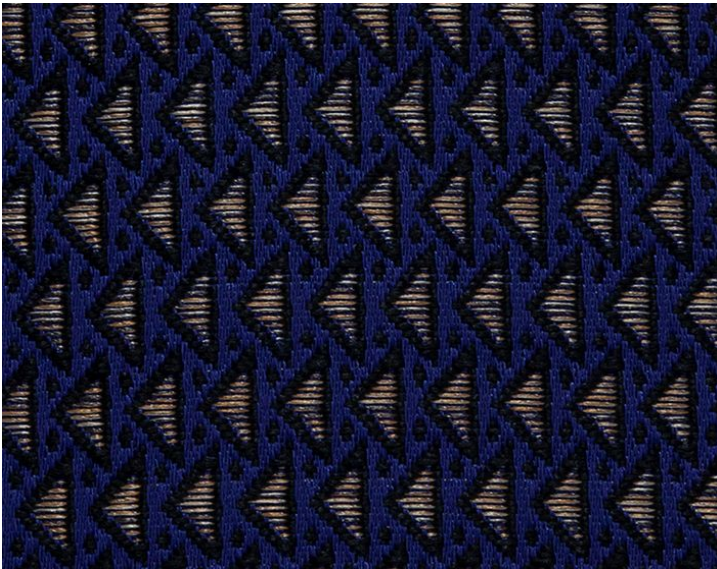
Jacquards / Wovens from the Contract 24 Collection by Lelièvre Paris



APPROX. MATERIAL WIDTH	54" / 137.16 cm
APPROX. REPEAT ..	HORIZONTAL 0.25" / 0.64 cm VERTICAL 0.75" / 1.91 cm
MATCH	STRAIGHT
CONTENT	100% POLYESTER, TREVIRA CS
SUGGESTED USE ..	HEAVY DUTY MULTIPURPOSE
PERFORMANCE / .. CONTRACT	FLAME RETARDANT (FR) HEAVY DUTY ABRASION IMO CERTIFIED
ABRASION	40,000 MARTINDALE
FIRECODE	M1, B1, CLASS 1, EN 2021 PART 1&2
CLEANABILITY	DRY CLEAN ONLY
MADE IN	FRANCE
STOCKED IN.	SUPPLIERS WAREHOUSE EUROPE
DESIGN	SMALL SCALE
SCALE	SMALL

DESIGN INSPIRATION

A small triangle, tie design full of character, yet easy to use. Diamant has a contrast of matte and sheen, due to its thoughtful construction; a micro diamond motif with reflective centers, delicately strewn over a matte thread on top a satin warp ground. This considered construction enhances the vividness of the colors. Multiple use is encouraged, but Diamant is ideal for small upholstered pieces in a sophisticated, refined interior.



DETAIL IMAGE