

KASAI

MARIN • H0 0001 0566

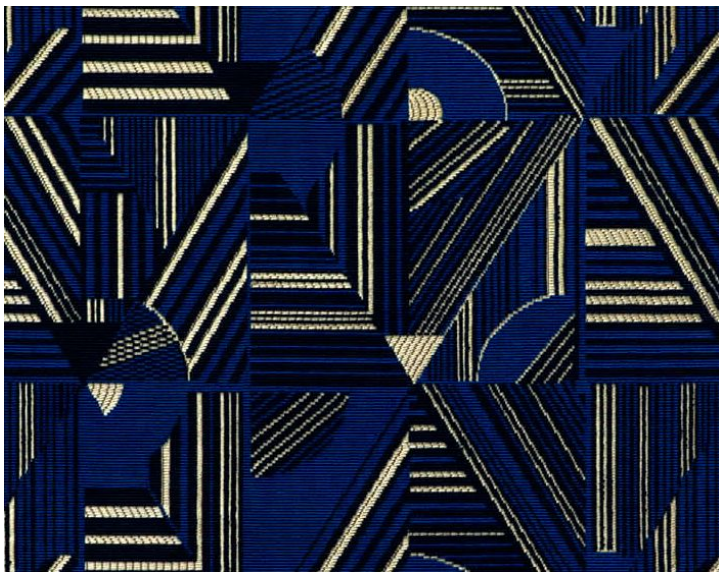
Jacquards / Wovens from the Evasions Collection by Lelièvre Paris



APPROX. MATERIAL WIDTH	55" / 139.70 cm
APPROX. REPEAT ..	HORIZONTAL 13.5" / 34.29 cm VERTICAL 11.75" / 29.85 cm
MATCH	STRAIGHT
CONTENT	78% VISCOSE 22% COTTON
SUGGESTED USE ..	MEDIUM DUTY MULTIPURPOSE
ABRASION	30,000 MARTINDALE
MADE IN	INDIA
STOCKED IN	SUPPLIERS WAREHOUSE EUROPE
DESIGN	GEOMETRIC GRAPHIC
SCALE	LARGE

DESIGN INSPIRATION

Inspired by the noble land and horizons of Africa, Kasai is a contemporary interpretation of the graphic textiles of Kuba Kasai. These velvets were woven by hand in a 400 year old method that has been continuously reinterpreted by modern artists. The motifs are formed by networks of parallel lines creating a diverse rhythmic geometric pattern. At the same time the matt and shiny reflections, colors, full and vibrant, give depth and richness to this cut velvet.



DETAIL IMAGE