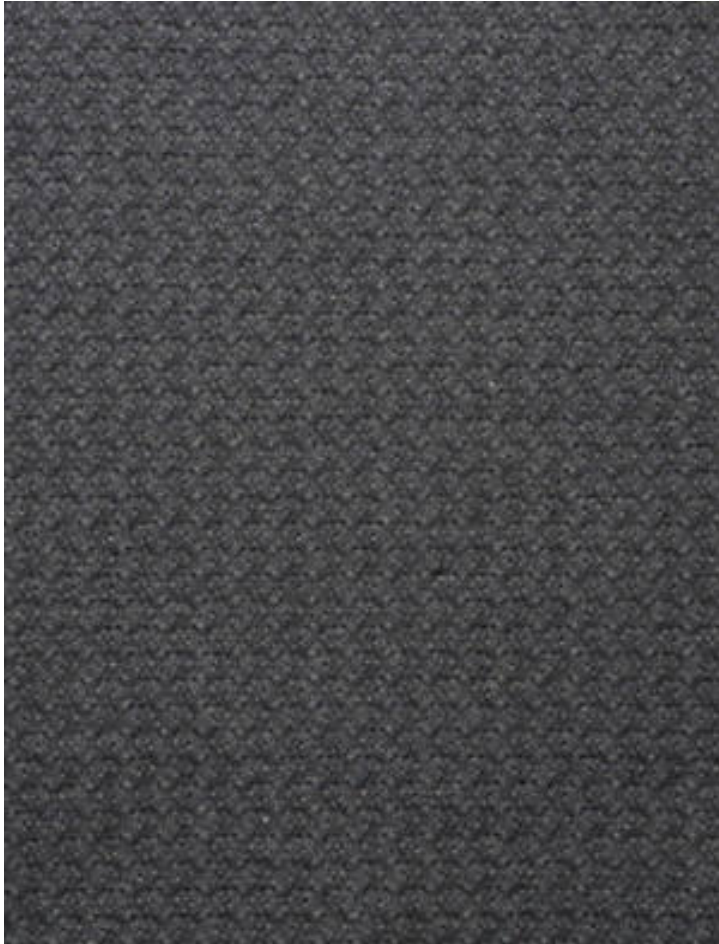


# LANDE

INDIGO • H0 0001 0564

Plains / Textures from the Evasions Collection by Lelièvre Paris



APPROX. MATERIAL WIDTH	57" / 144.78 cm
APPROX. REPEAT ..	HORIZONTAL 0" / 0 cm VERTICAL 0" / 0 cm
CONTENT .....	63% COTTON 20% LINEN 10% WOOL 7% ACRYLIC
SUGGESTED USE ..	MEDIUM DUTY MULTIPURPOSE
ABRASION .....	25,000 MARTINDALE
MADE IN .....	ITALY
STOCKED IN .....	SUPPLIERS WAREHOUSE EUROPE
DESIGN .....	TEXTURE
SCALE .....	PLAIN / SOLID

#### DESIGN INSPIRATION

Lande has a natural look and feel. The material has mixed weft yarns in a fine warp structure of superimposed diamond shaped motif. Hardly visible, this ligature in the geometric fragments shows matt finesse and refinement, bound like a vegetal fiber. 4 soft colorways, with intense earth and stone tints and a beautiful blue like natural indigo. For upholstery, curtains, wall coverings and accessories.



DETAIL IMAGE