

OLEANA

STARLIGHT • GW 0001 16619

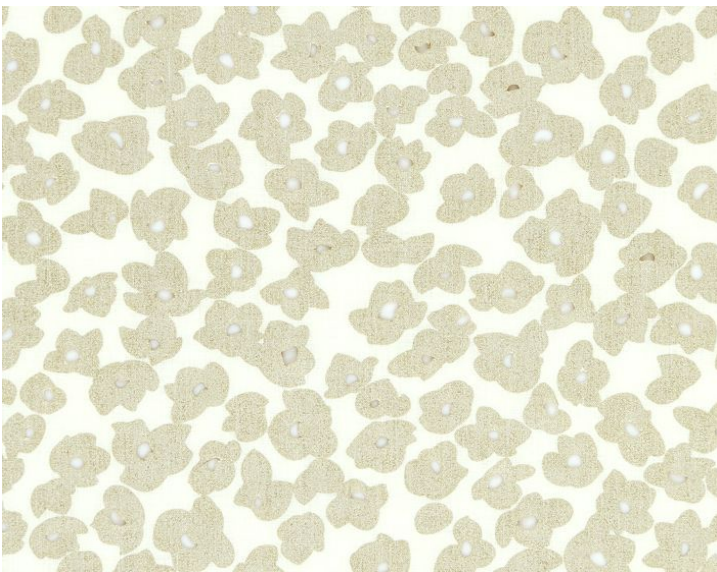
Printed Fabrics, Sheers from the Flora Collection by Grey Watkins



APPROX. MATERIAL WIDTH 53.5" / 135.89 cm
APPROX. REPEAT .. HORIZONTAL 13" / 33.02 cm
VERTICAL 37" / 93.98 cm
MATCH STRAIGHT
CONTENT 100% LINEN
SUGGESTED USE .. LIGHT DUTY SHEER
CLEANABILITY DRY CLEAN ONLY
MADE IN SWITZERLAND
STOCKED IN. SCALAMANDRE WAREHOUSE U.S.A.
DESIGN FLORAL
SCALE LARGE

DESIGN INSPIRATION

Using a two-step process of screen printing and laser burn out, Oleana evokes falling cherry blossoms and creates a whimsical dot-pattern when backlit. Fine linen ground with subtle slub. Printed with a pearlized metallic pigment. Layer Oleana over a solid fabric for a two tone effect.



DETAIL IMAGE