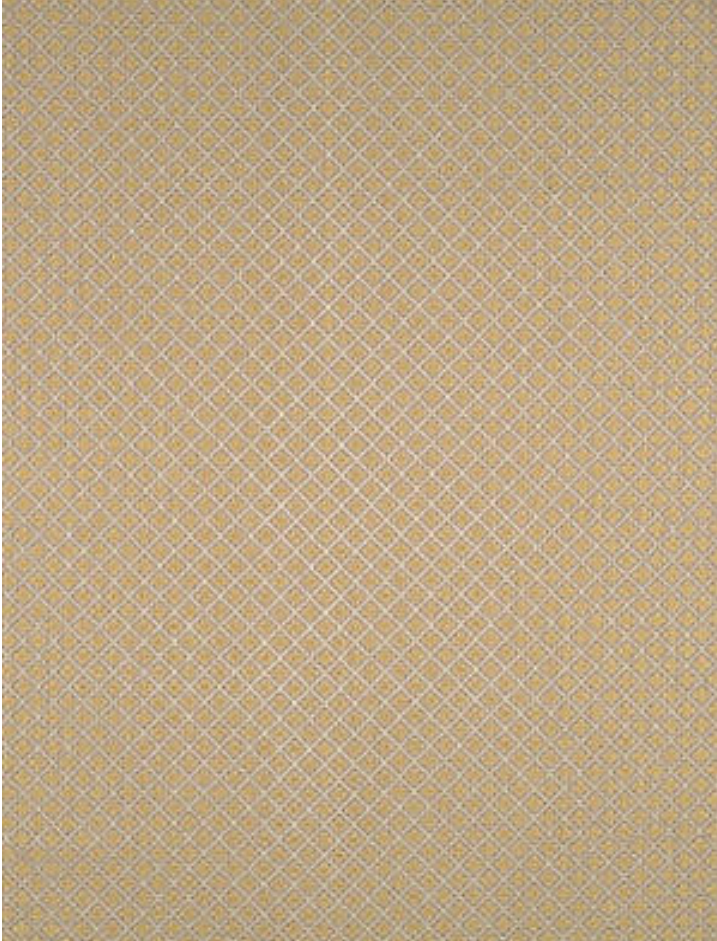


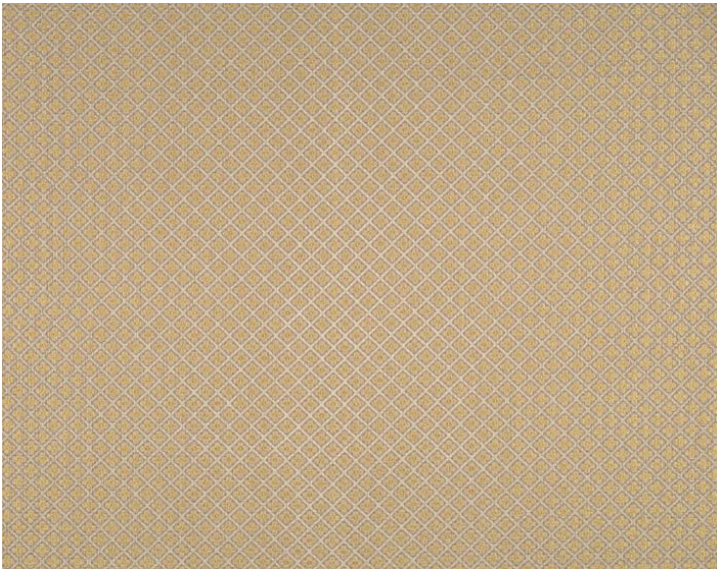
BELGRAVIA TRELLIS

COLONIALE • CL 0001 26521

Jacquards / Wovens, Lampases from the Colony Fabric Collection by Colony



APPROX. MATERIAL WIDTH 55" / 139.70 cm
APPROX. REPEAT .. HORIZONTAL .875" / 2.22 cm
VERTICAL .875" / 2.22 cm
CONTENT 62% COTTON 38% VISCOSE
SUGGESTED USE .. LIGHT DUTY MULTIPURPOSE
ABRASION 12,000 WYZENBEEK
MADE IN ITALY
DESIGN DIAMOND / OGEE
SMALL SCALE
SCALE SMALL



DETAIL IMAGE