

ALTUBIC

WHITE • CH 0800 2808

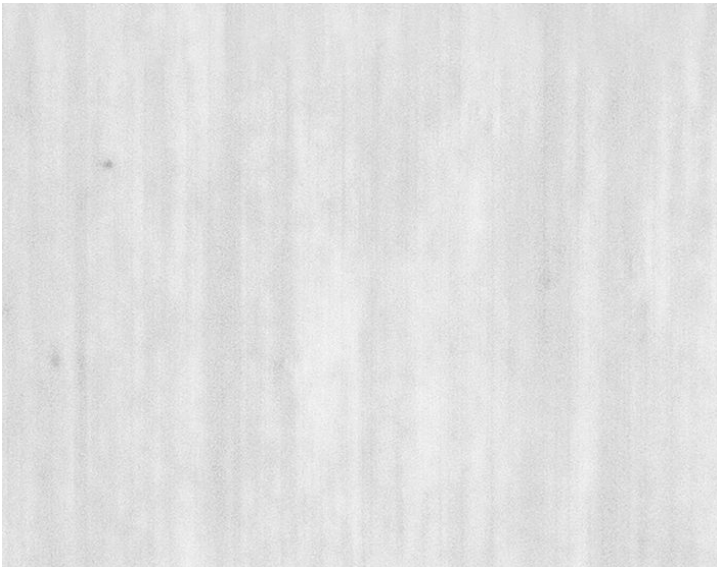
Sheers from the Bicentenary Collection by Fischbacher 1819



APPROX. MATERIAL WIDTH 126" / 320.04 cm WIDE WIDTH
APPROX. REPEAT .. HORIZONTAL 0" / 0 cm
VERTICAL 0" / 0 cm
CONTENT 70% TREVIRA CS 30% POLYESTER FR
SUGGESTED USE .. LIGHT DUTY SHEER
PERFORMANCE / .. FLAME RETARDANT (FR)
CONTRACT WIDE WIDTH FR
LIGHT FASTNESS .. BLUE WOOL SCALE: 4-5
CLEANABILITY DRY CLEAN ONLY
MADE IN ITALY
STOCKED IN. SUPPLIERS WAREHOUSE EUROPE
DESIGN MOIRE
SCALE PLAIN / SOLID

DESIGN INSPIRATION

A light, double-width, transparent, two-ply fabric with a fascinating moiré effect. Taking on different characteristics depending on the angle in which it is viewed, each of Altubic's 10 colorways have elegant sheen as well as flame-retardant properties.



DETAIL IMAGE