

# AUREA

## EASTERN EGG • CH 0201 3712

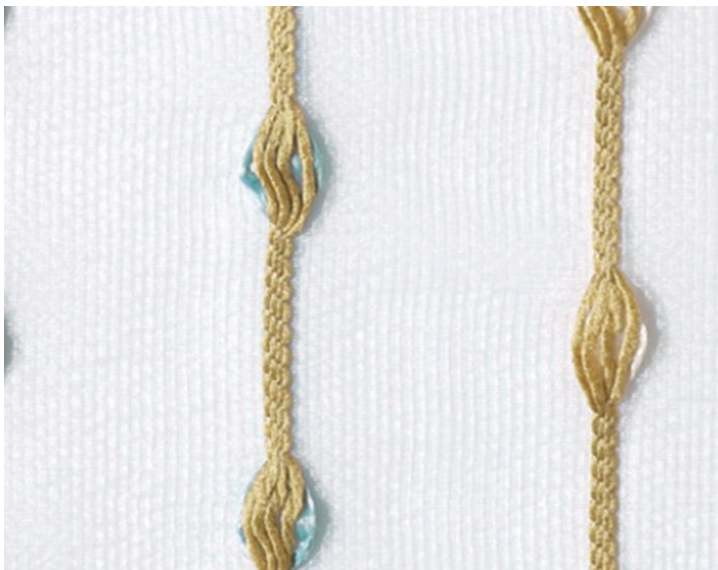
Embroideries, Sheers from the Urban Luxury Collection by Fischbacher 1819



APPROX. MATERIAL WIDTH	124" / 314.96 cm
APPROX. REPEAT ..	HORIZONTAL 9.75" / 24.77 cm VERTICAL 2" / 5.08 cm
MATCH .....	STRAIGHT
CONTENT .....	100% POLYESTER TREVIRA CS
SUGGESTED USE ..	LIGHT DUTY SHEER
PERFORMANCE / ..	FLAME RETARDANT (FR)
CONTRACT	WIDE WIDTH FR
MADE IN .....	ITALY
STOCKED IN. ....	SUPPLIERS WAREHOUSE GERMANY
DESIGN .....	DOTS / CIRCLES STRIPE
SCALE .....	SMALL

### DESIGN INSPIRATION

Aurea is a jewel of a fabric with its cord-like stripes on organza that look like strung-up jewels, dangling from the ceiling. The fabric combines classic craftsmanship with an innovative look. Thanks to its 100% Trevira CS material composition, the fabric is flame-retardant and easy-care, and is suitable both for private use and for upscale contract projects.



DETAIL IMAGE