

THOMPSON CHENILLE

MINERAL • BK 0001 K65114

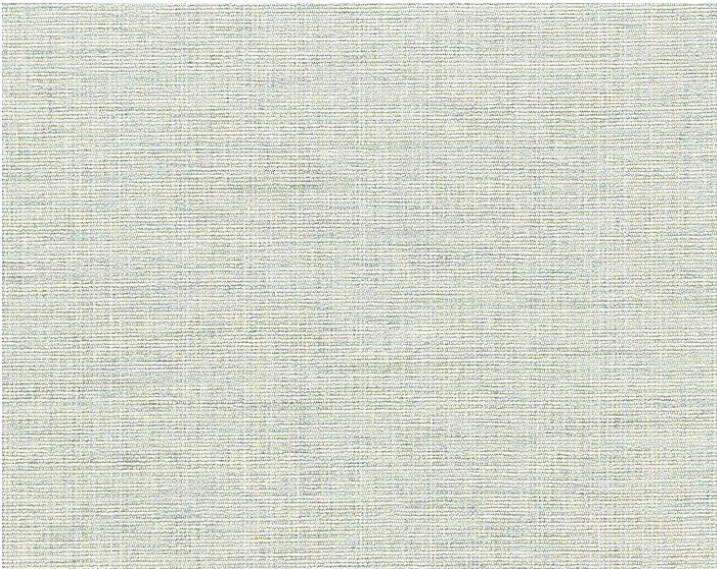
Plains / Textures from the Boris Kroll - Calypso - Crypton Home Collection by Scalamandre



APPROX. MATERIAL WIDTH	58.25" / 147.96 cm
CONTENT	53.5% COTTON 46.5% RAYON
FINISH.	CRYPTON HOME ACRYLIC BACKED
SUGGESTED USE . .	HEAVY DUTY UPHOLSTERY
PERFORMANCE / .. CONTRACT	PERFORMANCE FINISH
ABRASION	54,000 WYZENBEEK
FIRECODE	CLASS I, CAL 117 UFAC AND NFPA 260
MADE IN	U.S.A.
STOCKED IN.	SCALAMANDRE WAREHOUSE U.S.A.
DESIGN	PLAIN / SOLID TEXTURE
SCALE	PLAIN / SOLID

DESIGN INSPIRATION

This ribbed texture is woven with plush chenille yarns for a velvety look. The slight shine of the warp yarns contrasts beautifully against the chenille creating a softened striated effect. The comfortable hand and high performance make it perfect for upholstered sofas and chairs. FEATURES: Acrylic Backed, GREENGUARD Gold Certified, Extremely Stain & Odor Resistant, Moisture Resistant, Anti-Microbial.



DETAIL IMAGE