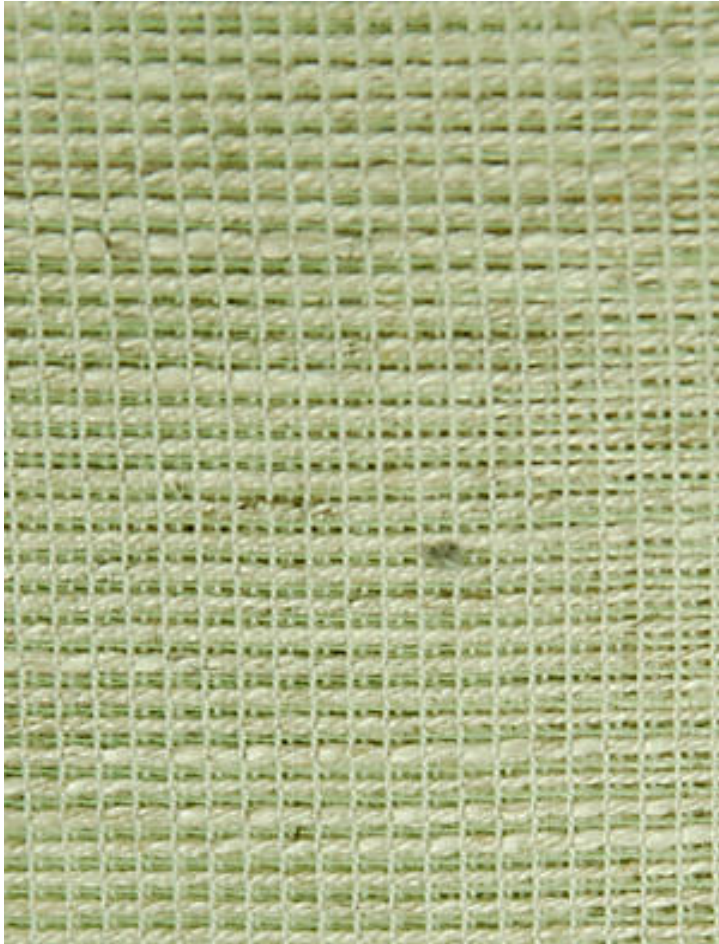


GIGI

TOUCH OF LIGHT GREEN • A9 0006 1894

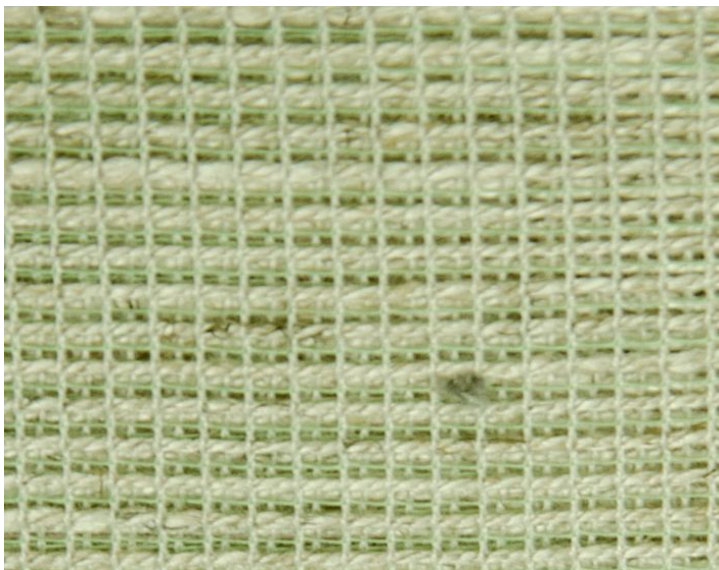
Sheers from the Optimist Collection by Aldeco



APPROX. MATERIAL WIDTH 126" / 320.04 cm WIDE WIDTH
APPROX. REPEAT .. HORIZONTAL 0" / 0 cm
VERTICAL 0" / 0 cm
CONTENT WITH LEAD BAND
48% VISCOSE 32% POLYESTER 20% LINEN
SUGGESTED USE .. LIGHT DUTY SHEER
MADE IN ITALY
STOCKED IN SUPPLIERS WAREHOUSE EUROPE
DESIGN TEXTURE
SCALE PLAIN / SOLID

DESIGN INSPIRATION

Transparent in an open and light net-like motif, available in very soft colors.



DETAIL IMAGE