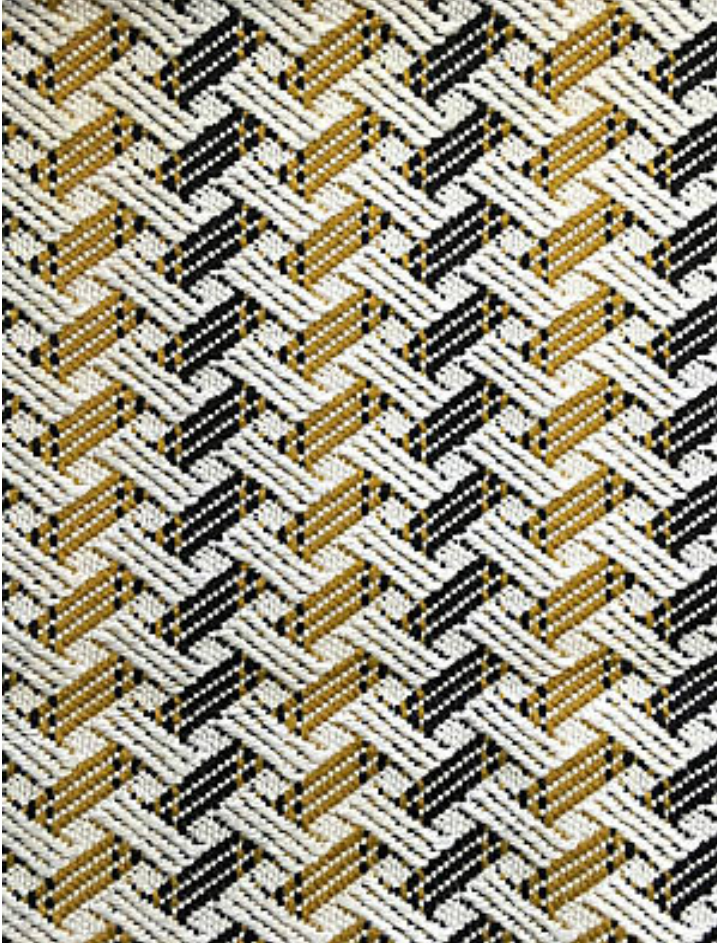


# TIEBELE

## GOLDEN ROD • A9 0001 TIEB

Jacquards / Wovens from the Invicta Collection by Aldeco



APPROX. MATERIAL WIDTH	55.12" / 140.00 cm
APPROX. REPEAT ..	HORIZONTAL 0.98" / 2.49 cm VERTICAL 2.36" / 5.99 cm
MATCH .....	STRAIGHT
CONTENT .....	100% POLYPROPYLENE
SUGGESTED USE ..	MEDIUM DUTY UPHOLSTERY
PERFORMANCE / ..	INDOOR / OUTDOOR CONTRACT
ABRASION .....	30,000 MARTINDALE
LIGHT FASTNESS ..	BLUE WOOL SCALE: 6-7
CLEANABILITY ....	WASHABLE, BLEACH CLEANABLE
MADE IN .....	ITALY
STOCKED IN .....	SUPPLIERS WAREHOUSE EUROPE
DESIGN .....	FRETWORK / LATTICE GEOMETRIC
SCALE .....	SMALL

### DESIGN INSPIRATION

Tiébélé, in Burkina Faso, is the African one-of-a-kind village with unique and stunning painted mud houses. They decorate their homes by painting intricate designs on the exterior walls of their houses, using colored mud and chalk. While the building of the home is done by the men, the painting is the woman's job. The houses are ornamented with incredibly precise and delicate folklore patterns. This incredible jacquard is inspired by Africa and this very ancient practice, resulting in a geometric, heavy fabric suitable both for indoor and outdoor use.



DETAIL IMAGE